

Instruction  
SP-Type01P-1NE  
December 2010

# NOR'EAST

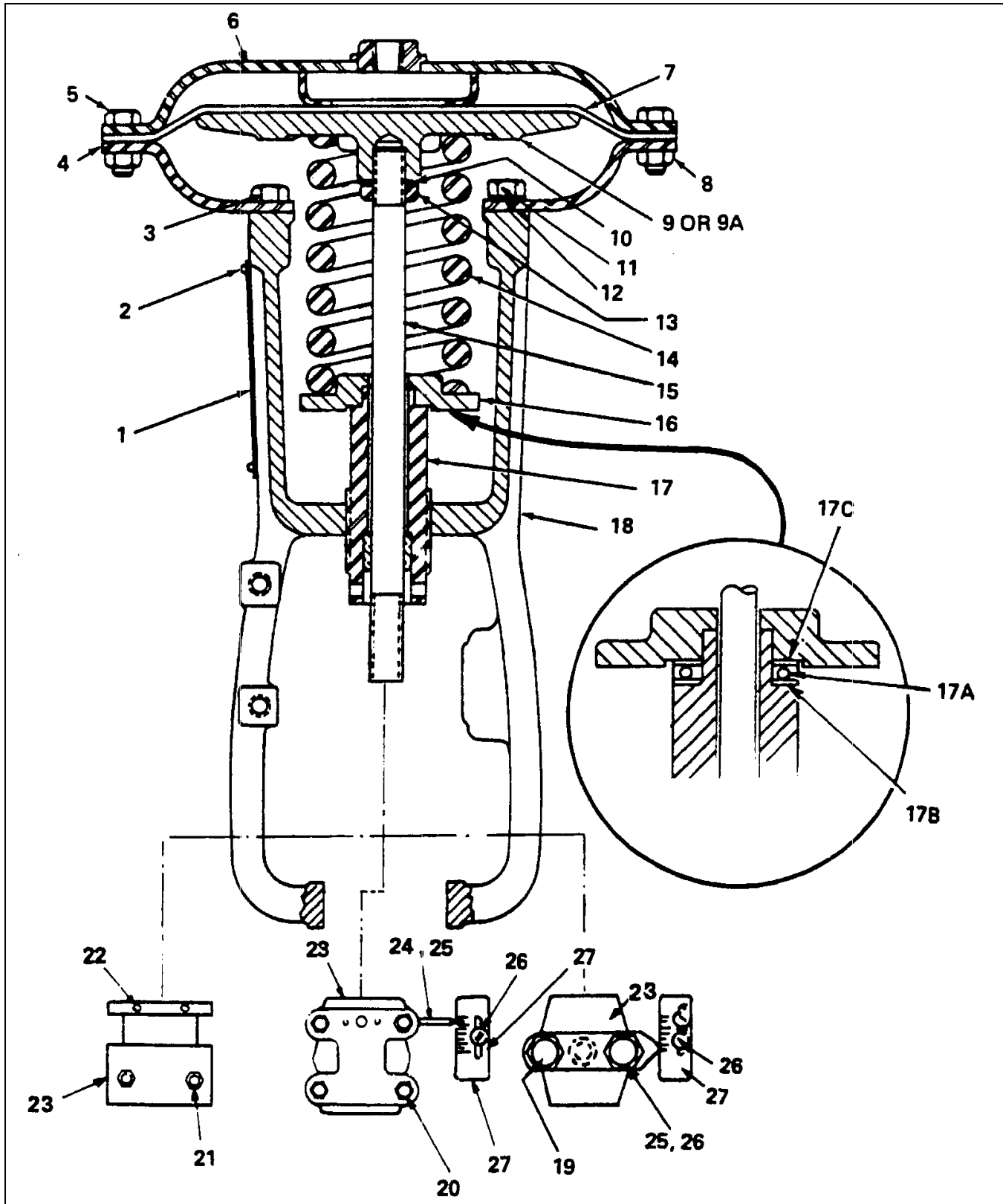
— CONTROLS, INC.  
A DIVISION OF ALLGASH INTERNATIONAL, INC.



## Spare Parts

TYPE 01 PNEUMATIC ACTUATOR,  
FUW GLOBE VALVES

Previously manufactured by Dezurik® and Honeywell®



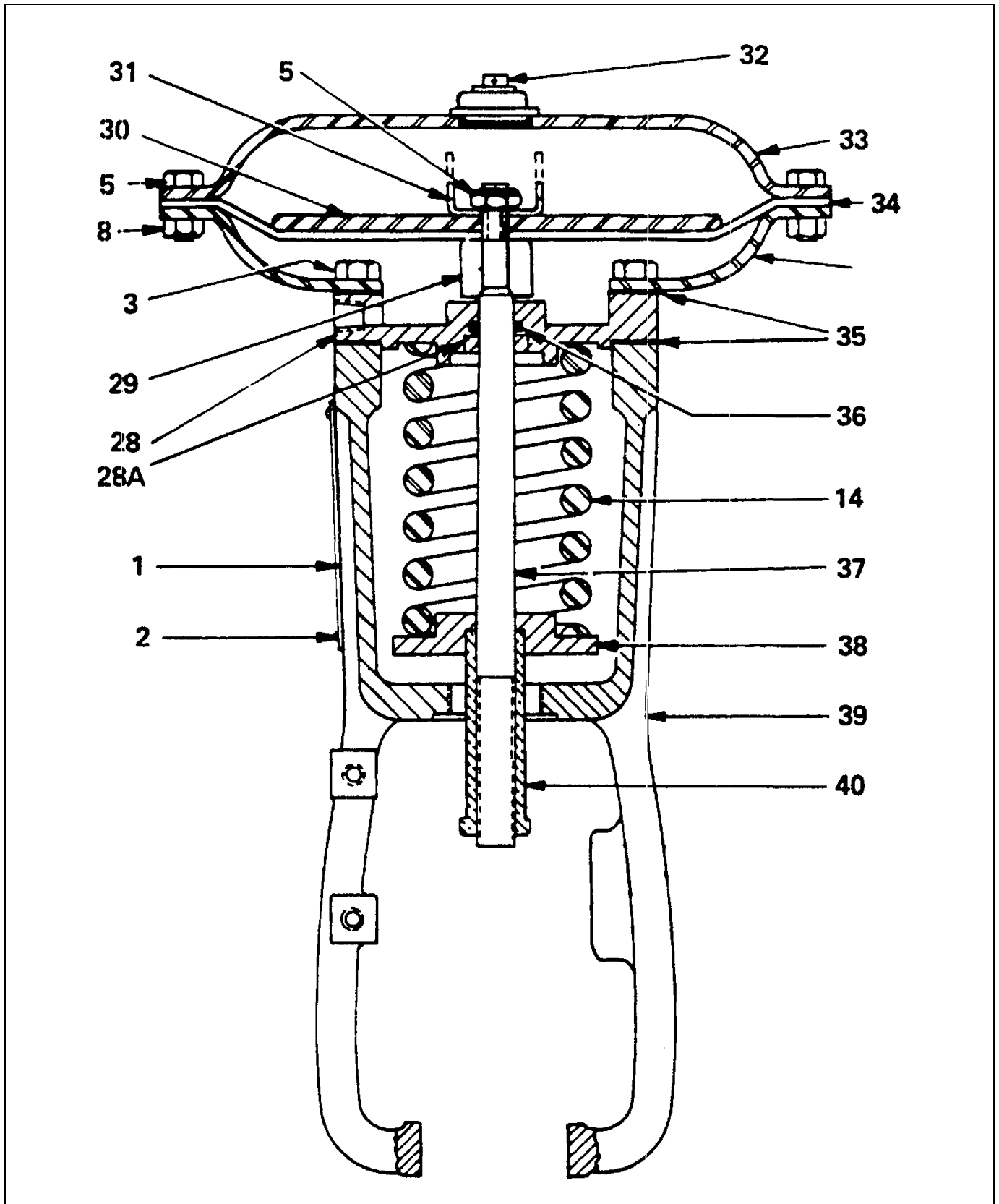
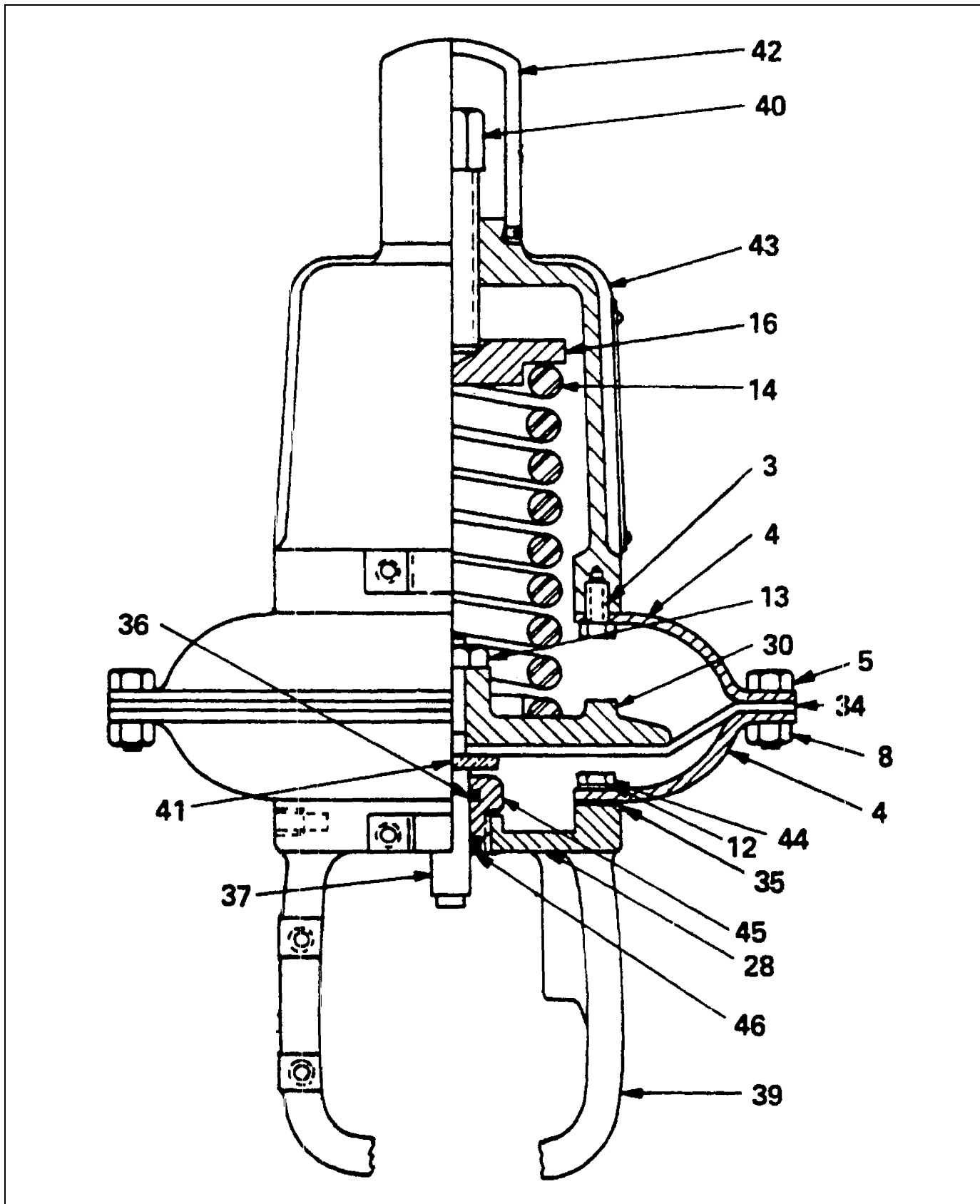
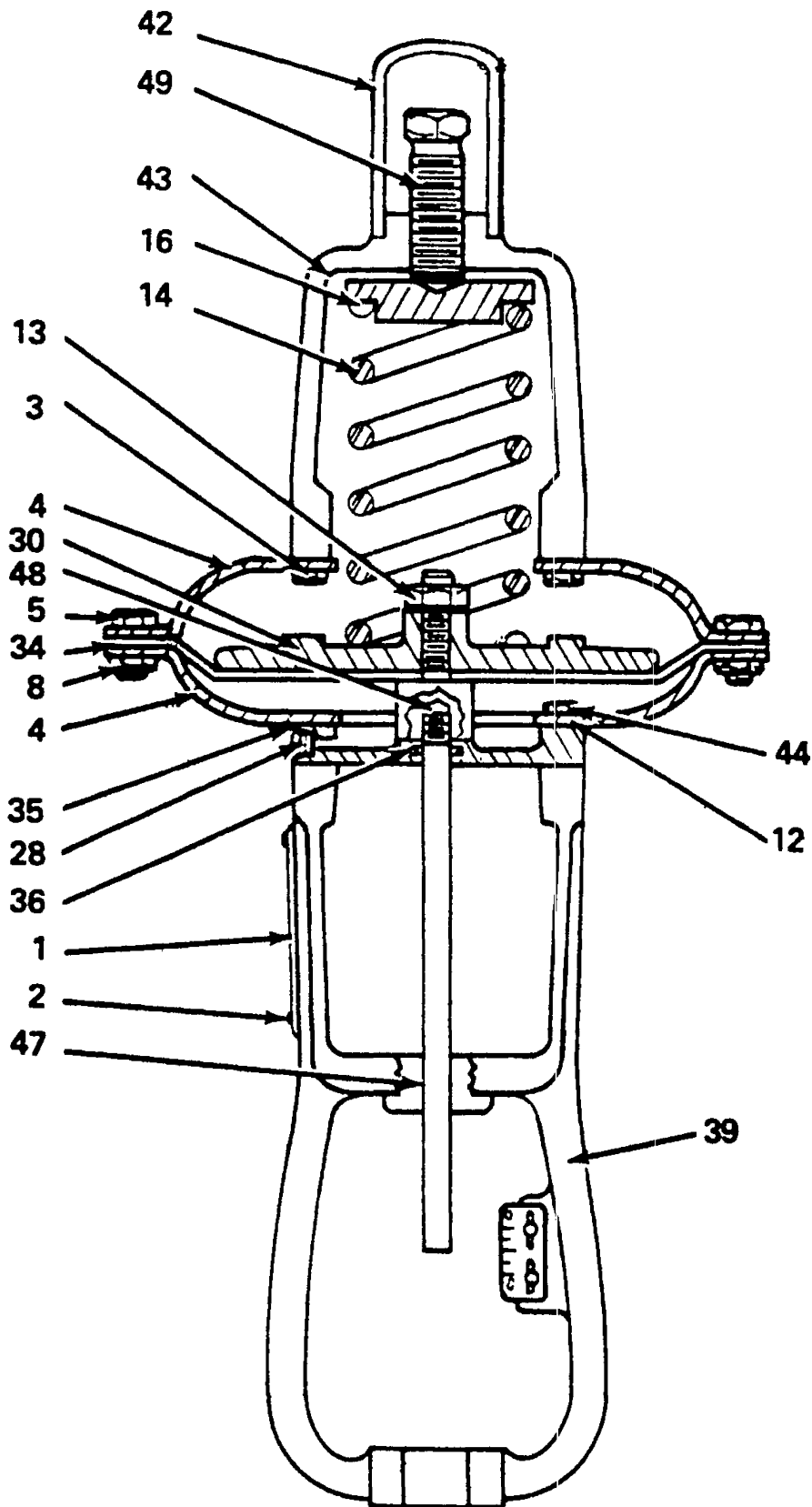


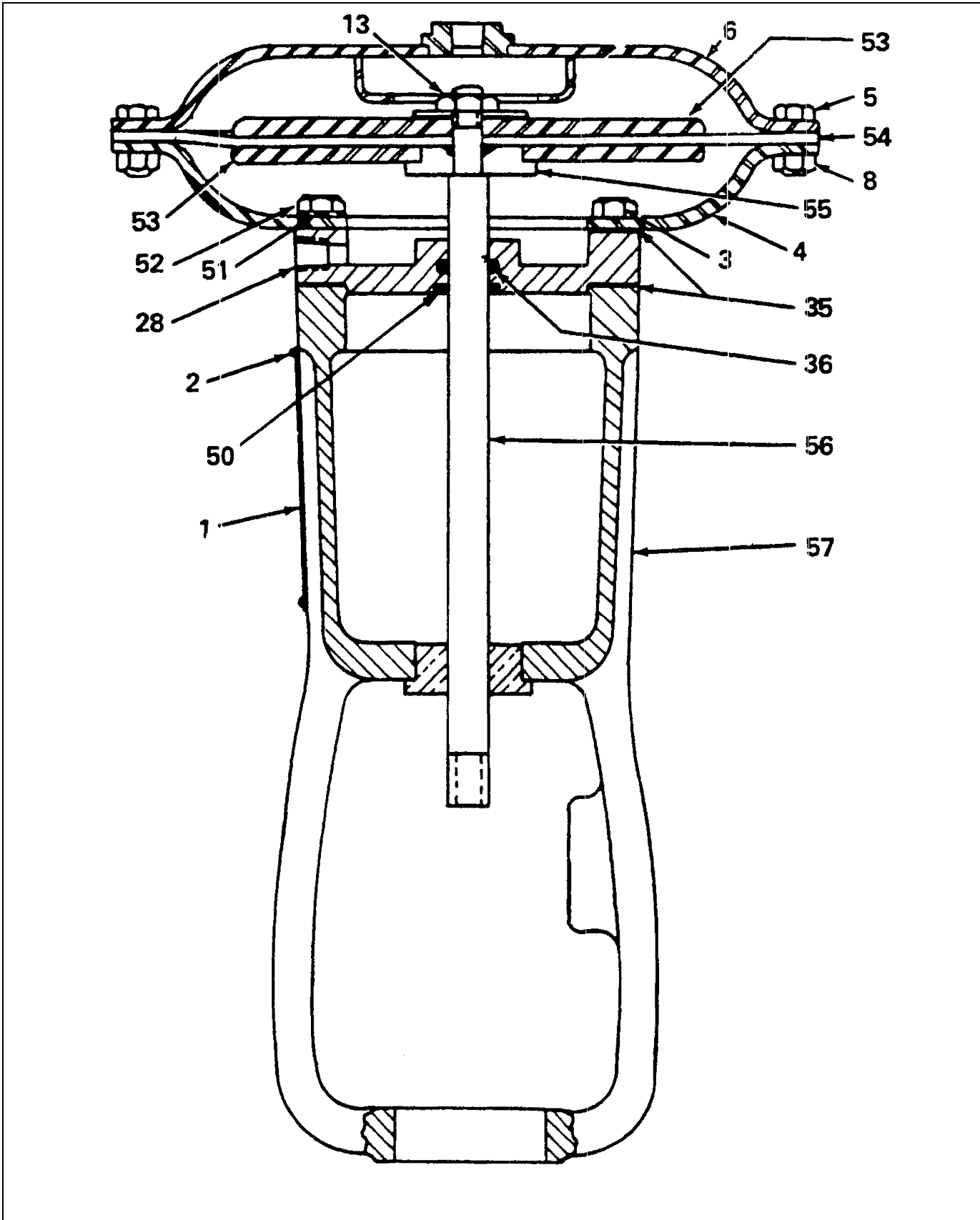
Figure 3 – Reverse Acting Actuator, Sizes 9 & 11



**Figure 4 – Reverse Acting Actuator, Sizes 13, 15, 18L & 18S**



**Figure 5 – Reverse Acting Actuator, Sizes 13, 15 & 18S with Long Yoke  
 (used only when Side Mounted Handwheel is required)**



**Figure 6 – Springless Actuator, Sizes 9, 11, 13, 15 & 18S**

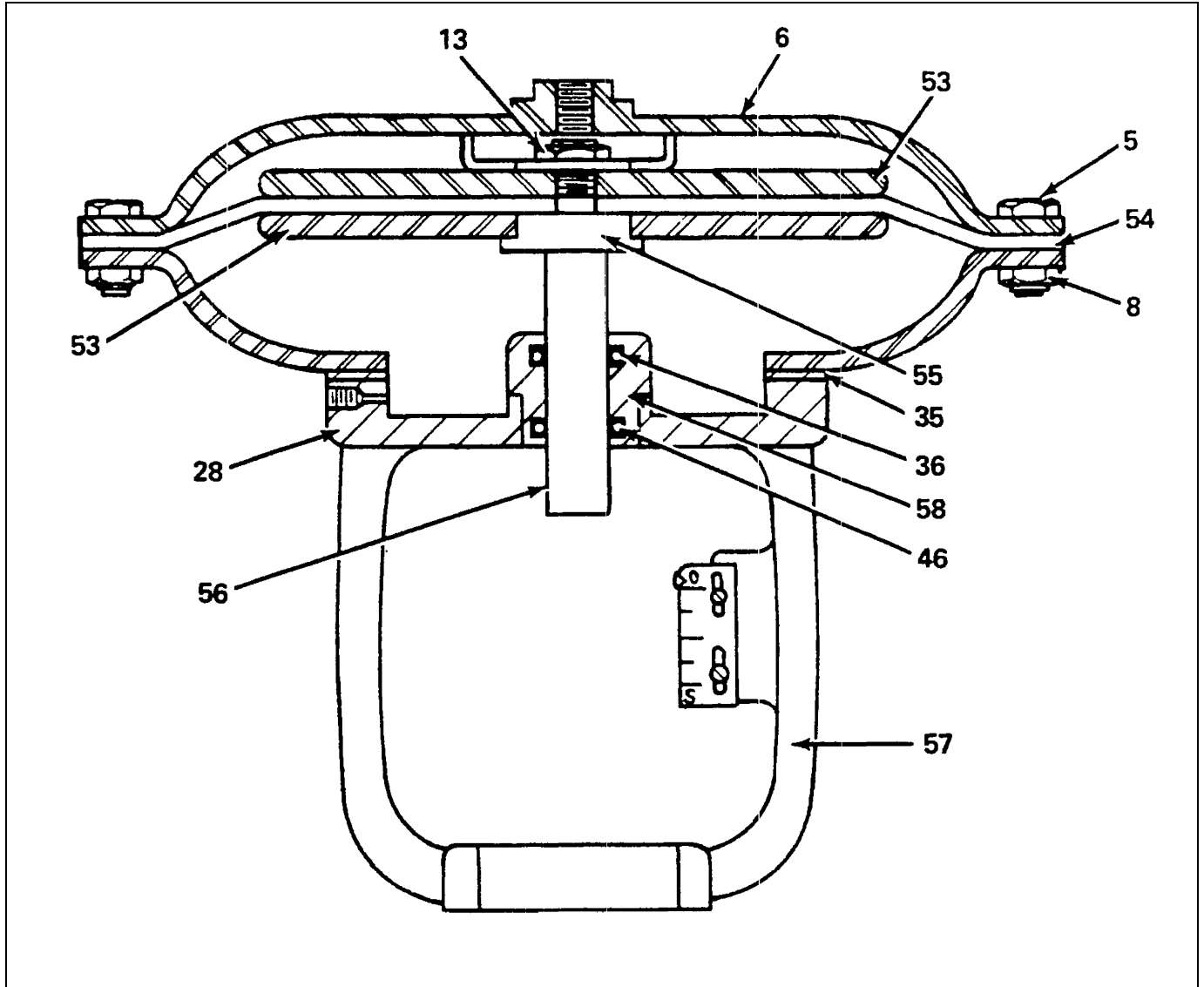
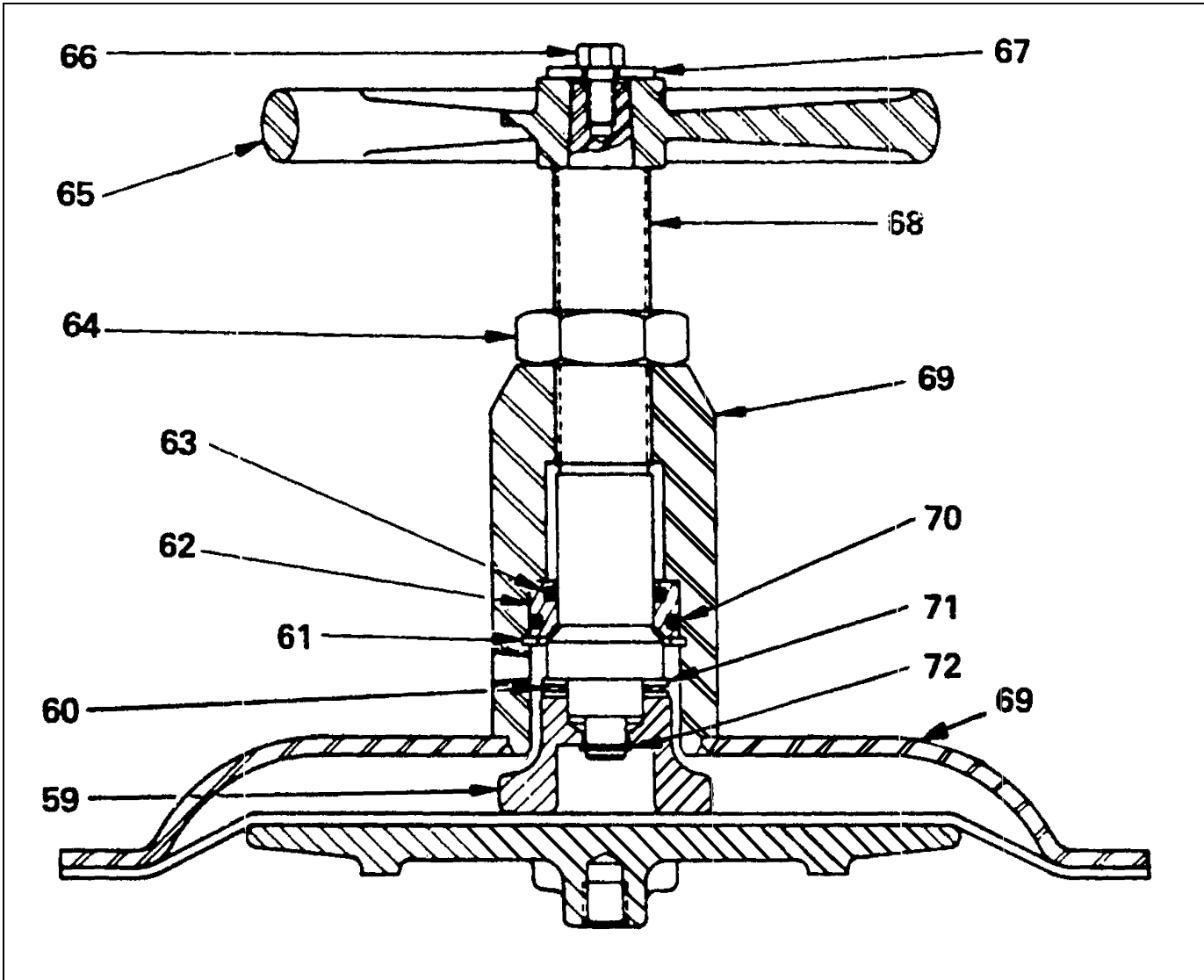


Figure 7 – Springless Actuator, Sizes 13, 15 & 18 with Short Yoke



**Figure 8 – Top Mounted Handwheel for Sizes 9, 11 & 13**



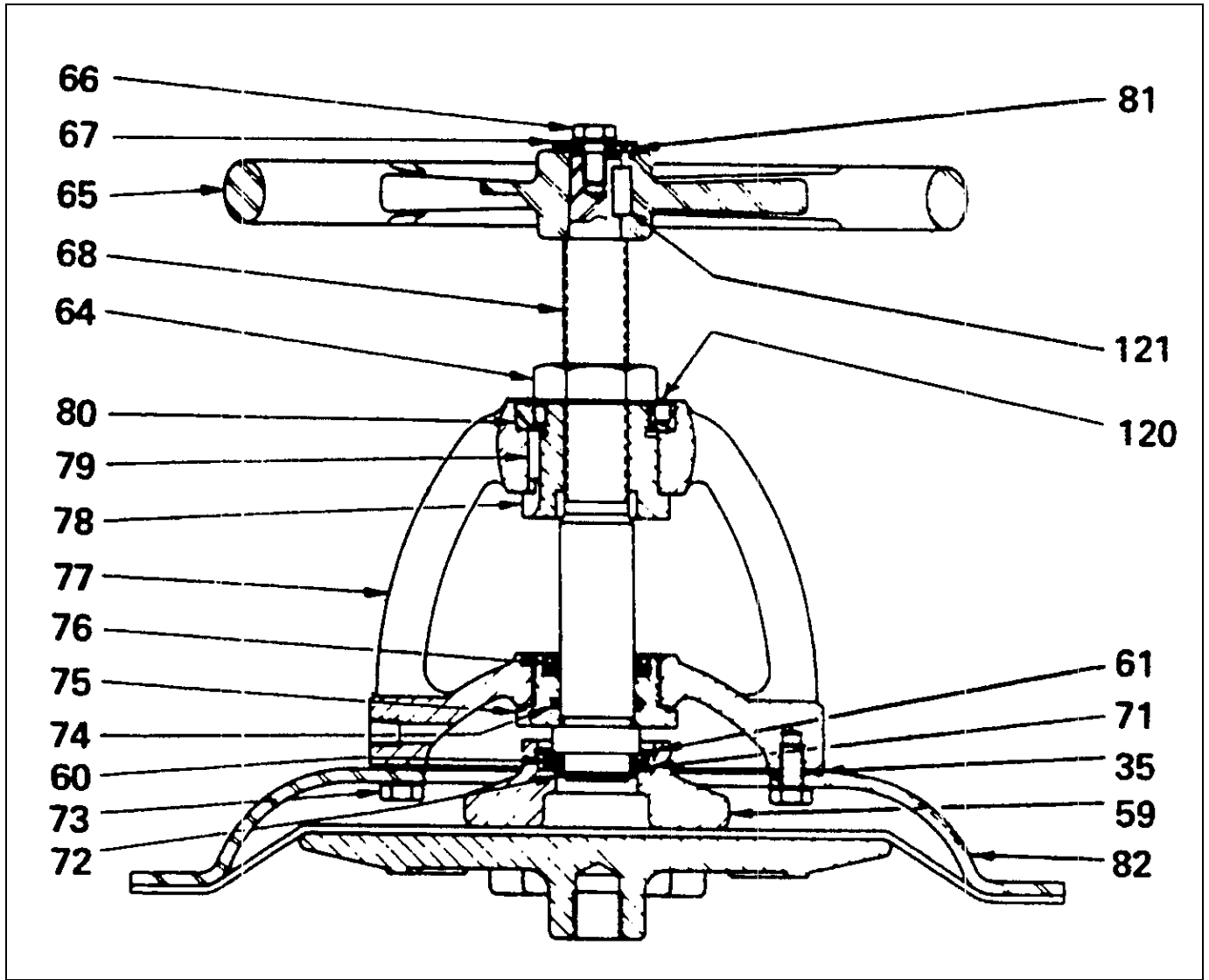
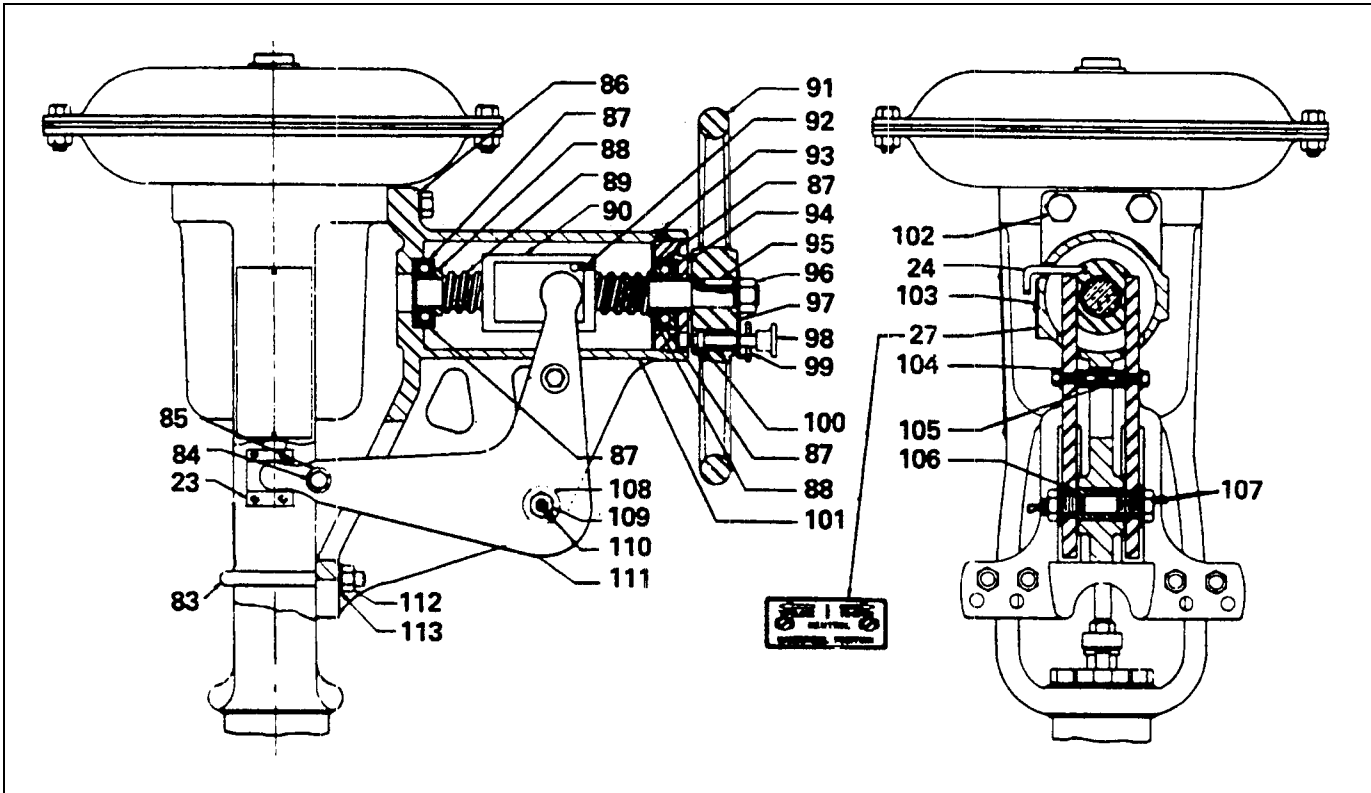
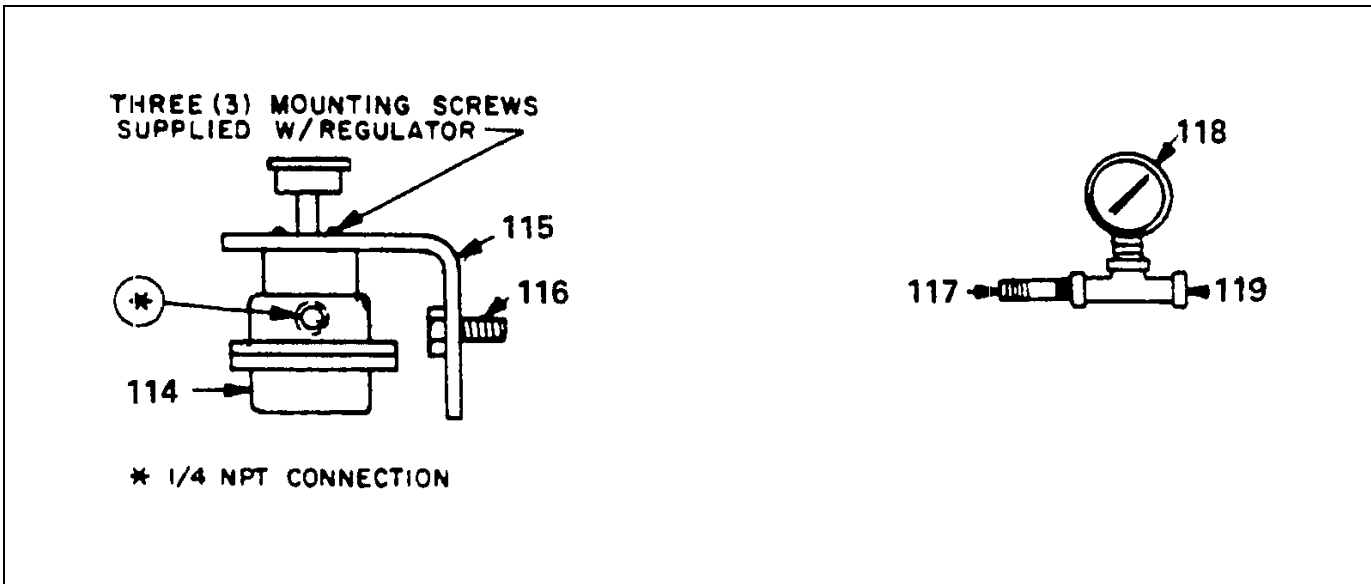


Figure 9 – Top Mounted Handwheel for Sizes 15, 18L & 18S



**Figure 10 – Side Mounted Handwheel**



**Figure 11 – Accessory Components**

**Nor' East**  
**SPARE PARTS - TYPE 01 PNEUMATIC ACTUATOR**

<b>Key No. 1 – Nameplate</b>
30032696-457

<b>Key No. 2 – Nameplate Screw</b>	
30021923-264	Qty 2

<b>Key No. 3 – Diaphragm Case Screw</b>						
Size	Direct Acting	Qty	Reverse Acting	Qty	Springless	Qty
01-9	30026199-262	3	30035671-262	6	30035671-262	3
01-11	30026199-262	3	30036165-264	6	30033089-264	3
01-13	30026199-262	4	30026199-262	12	30026199-262	4
01-15	30021642-262	4	30021642-262	12	30021642-262	8
01-18	30021642-262	6	30021642-262	18	30021642-262	6

<b>Key No. 4 – Lower Diaphragm Case</b>					
Size	01-9	01-11	01-13	01-15	01-18
	30032407-277	30032409-277	30032411-277	30032479-277	30032477-277

<b>Key No. 5 – Diaphragm Case Screw</b>					
Size	01-9	01-11	01-13	01-15	01-18
	30022031-262	30020411-264	30020411-264	30007662-262	30008671-262
Qty	10	12	16	18	20

<b>Key No. 6 – Diaphragm Case Sub-assembly</b>					
Includes Upper Diaphragm Case, Pressure Connection and Internal Stop					
Size	01-9	01-11	01-13	01-15	01-18
	30067298-915	30685495-001	30033785-915	30033835-915	30678758-001

<b>Key No. 7 – Diaphragm</b>					
Size	01-9	01-11	01-13	01-15	01-18
	30067301-001	30685491-001	30033673-001	30033837-001	30033677-001

<b>Key No. 8 – Diaphragm Case Nut</b>					
Size	01-9	01-11	01-13	01-15	01-18
	30032522-262	30032523-264	30032523-262	30032524-262	30032534-262
Qty	10	12	16	18	20

<b>Key No. 9 – Diaphragm Plate</b>					
Size	01-9	01-11	01-13	01-15	01-18
	30067296-200	30685481-001	30033746-200	30032515-200	30032518-200 for 2 & 2-1/2" travel 30046233-200 for 3-1/2" travel 30033878-200 for 4" travel

# Nor' East

## SPARE PARTS - TYPE 01 PNEUMATIC ACTUATOR

Key No. 9A – Diaphragm Plate and Stem Assembly					
Size	01-9	01-11	01-13	01-15	01-18
	30067295-907	30685494-001	30049129-907	30049153-907	30049213-907 for 2 & 2-1/2" travel 30049226-907 for 3-1/2" travel 30049469-907 for 4" travel

Key No. 10 – Washer					
Size	01-9	01-11	01-13	01-15	01-18
	30067180-264	30067181-264	30067181-264	30067182-264	30067183-264

Key No. 11 – Screw, Diaphragm Case to Yoke								
01-9	Travel	Qty	01-11	Travel	Qty	01-13	Travel	Qty
30022052-262	9/16"	3	30032586-264	9/16"	3	30009994-264	1"	4
30020411-262	3/4"	3	30033089-264	3/4"	3	30026199-262	1-1/4"	8
30008433-262	1"	3	30020319-264	1"	3	30026199-262	1-1/2"	8
			30020411-264	1-1/8"	3			
			30009994-264	1-1/4"	3			
01-15	Travel	Qty	01-18	Travel	Qty			
30007662-262	1-1/2"	4	30007662-264	2"	6			
30021642-262	2"	4	30021642-262	2-1/2"	6			
			30021642-262	3-1/2"	6			
			30021642-262	4"	6			

Key No. 12 – Spacer								
01-9	Travel	Qty	01-11	Travel	Qty	01-13	Travel	Qty
30069402-227	9/16"	3	30685492-011	9/16"	3	30049137-227	1"	4
30049049-227	3/4"	3	30685492-006	3/4"	3	30049137-227	1-1/4"	4
30049154-227	1"	3	30685492-008	1"	3	30049137-227	1-1/2"	4
			30049049-227	1-1/8"	3			
			30049137-227	1-1/4"	3			
01-15	Travel	Qty				01-18	Travel	Qty
30049175-227	1-1/2"	4				30049175-227	2"	6
30049175-227	2"	4 (with 3-15 psi spring range)						

Key No. 13 – Locknut					
Size	01-9	01-11	01-13	01-15	01-18
	30020134-264	30020129-264	30020129-264	30023177-264	30028886-262

Key No. 14 – Actuator Spring						
Size	01-9 Range		01-11 Range		01-13 Range	
Travel	3-15 psi	6-30 psi	3-15 psi	6-30 psi	3-15 psi	6-30 psi
9/16"	30032607-279	30032608-279	30032613-279	—	—	—
3/4"	30032609-279	30032610-279	30026956-279	30035606-279	—	—
1"	30067491-279	30067493-279	30049096-279	30049098-279	30034994-226	30041235-226
1-1/8"	30067494-279	30067496-279	30032612-279	30032613-279	—	—
1-1/4"	—	—	30685496-001	30685498-001	30032614-226	30032616-226
1-1/2"	—	—	30685499-001	30685501-001	30032615-226	30032616-226

# Nor' East

## SPARE PARTS - TYPE 01 PNEUMATIC ACTUATOR

Key No. 14 – Actuator Spring (Continued)						
Size	01-15 Range		01-18 Range		01-24 Range	
Travel	3-15 psi	6-30 psi	3-15 psi	6-30 psi	3-15 psi	6-30 psi
1-1/2"	30049191 -226	30049193-226	—	—		
2"	30032617-226	30032618-226	30049204-226	30049207-226 and 30049206-226	—	—
2-1/2"	—	—	30032619-226	30032621-226 and 30032620-226	—	—
3-1/2"	—	—	30032703-226	30032622-226 and 30032623-226	—	—
4"	—	—	30032624-226	30032626-226 and 30032625-226	30037125-226 (outer)	30037126-226 (outer)
	—	—	—	—	—	30037127-226 (Inner)

Key No. 15 – Actuator Stem						
Size	01-9	01-11	01-13	01-15	01-18	
	30067297-193	30685489-001	30049128-193	30049155-193 30044339-193*	30049214-193 30049227-193** 30494674-193***	
* For 01-15 with 2" travel screwed gland ** For 01-18 with 3-1/2" travel *** For 01-18 with 4" travel						

Key No. 16 – Spring Seat					
Size	01-9	01-11	01-13	01-15	01-18
	30049003-200	30032480-200	30032481-200	30032482-200	30032483-200

Key No. 17 – Spring Seat Subassembly					
Size	01-9	01-11	01-13	01-15	01-18
	30049004-918	30049051-918	30032539-918	30032543-918	30032542-918 18S (2 – 2-1/2" travel)
				30036719-918***	30032541-918 18L (3-1/2 - 4" travel)
*** For 01-15 with 2" travel, 6-30 psi range					

Key No. 17A, B & C – Spring Adjustor Bearing and Washer		
Size	01-15	01-18
17A Bearing	30689664-001	30045791-262
17B Washer	30689665-001	—
17C Washer	30689665-002	—

Key No. 18 – Yoke					
Size	01-9	01-11	01-13	01-15	01-15 w/2" Tvl.
w/o side mtd. H/W	30033157-200	30033097-200	30033098-200	30032736-200	30032677-200
w/side mtd. H/W	—	30038118-200	30038123-200	30038125-200	30039823-200
Size	01-18	01-18 w/2-1/2" Tvl.	01-18 w/3-1/2" or 4" Tvl.		
w/o side mid. H/W	30049212-200	30032733-200	30032704-200		
w/side mtd. H/W	30049217-200	30038124-200	—		

Key No. 19 – Screw, Stem Connector	
30008104-264	Qty 2

# Nor' East

## SPARE PARTS - TYPE 01 PNEUMATIC ACTUATOR

### Key No. 20 – Screw, Stem Connector

30026077-264	Qty 4
--------------	-------

### Key No. 21 – Screw, Stem Connector for Side Mounted Handwheel

30021954-264	Qty 2
--------------	-------

### Key No. 22 – Screw, Stem Connector for Side Mounted Handwheel

30000013-010	Qty 2
--------------	-------

### Key No. 23 – Stem Connector

Size	01-9	01-11, 01-13	01-11, 01-13
Actuator stem thread	5/8-18	3/4-16	3/4-16
Valve stem thread	3/8-24	3/8-24	7/16-20
w/o side mtd. handwheel	30049000-749	30049060-749	30047045-749
w/side mtd. handwheel	—	30049072-193	30049071 -193
Size	01-11,01-13	01-15	01-15
Actuator stem thread	3/4-16	7/8-14	7/8-14
Valve stem thread	1/2-20	1/2-20	5/8-18
w/o side mtd. handwheel	30047047-749	30049157-749	30049156-749
w/side mtd. handwheel	30049130-193	30049168-193	30049167-193
Size	01-18	01-18	01-18
Actuator stem thread	1-14	1-14	1-14
Valve stem thread	5/8-18	3/4-16	1-14
w/o side mtd. handwheel	30047831-294	30049215-294	30049228-294
w/side mtd. handwheel	30049219-193	30049218-193	30084478-193

### Key No. 24 – Travel Indicator

Size	01-9	01-11	01-13	01-15	01-18
w/o side mtd. handwheel	30049010-193	30049059-193	30049010-193	30049158-193	30049216-193
w/side mtd. handwheel	—	30037796-322	30037796-322	30037796-322	30037796-322

### Key No. 25 – Screw, Stem Connector

30020617-264	Qty 2
--------------	-------

### Key No. 26 – Screw, Travel Indicator

30020106-264	Qty 2 (except 01-9 uses Qty. 1)
--------------	---------------------------------

# Nor' East

## SPARE PARTS - TYPE 01 PNEUMATIC ACTUATOR

<b>Key No. 27 – Travel Indicator Scale</b>					
Travel (inches)	9/16"	3/4"	1"	1-1/8"	1-1/4"
Other than Threeway Valves	30034948-454	30034949-454	30038158-454	30032589-454	30032553-454
Threeway Valves	30047157-454	30037374-454	30069257-454	—	30047178-454
Travel (Inches)	1-1/2"	2"	2-1/2"	3-1/2"	4"
Other than Threeway Valves	30032551-454	30032653-454	30033904-454	30042274-454	30033906-454
Threeway Valves	—	30047179-454	30047180-454	30048381-454	30065471-454

<b>Key No. 27 – Indicator Scale, for Side Mounted Handwheel</b>			
<b>Size</b>	<b>01-11</b>	<b>01-13</b>	<b>01-15, 01-18</b>
	30037793-454	30037793-239	30037782-454

<b>Key No. 28 – Adaptor, Reverse Acting and Springless Actuators</b>					
<b>Size</b>	<b>01-9</b>	<b>01-11</b>	<b>01-13</b>	<b>01-15</b>	<b>01-18</b>
Reverse Actuator	30067305-200	30685487-001	30032735-200	30032754-200	30032632-200
Springless Actuator	30067305-200	30685488-001	30032735-200	30032754-200	30032632-200

<b>Key No. 28A — Bearing</b>
Size 01-9 only, use 30049006-144

<b>Key No. 29 — Washer</b>
Size 01-9 and 01-11, use 30066427-276

<b>Key No. 30 — Diaphragm Plate</b>					
<b>Size</b>	<b>01-9</b>	<b>01-11</b>	<b>01-13</b>	<b>01-15</b>	<b>01-18*</b>
	30037457-277	30685482-001	30032581-200	30032687-200	30032692-200

\* Size 01-18 with 3-1/2" travel uses 30049230-200

<b>Key No. 31 — Internal Stop</b>		
<b>Size</b>	<b>01-9</b>	<b>01-11</b>
<b>Travel (inches)</b>		
9/16"	30066421-219	30685485-007
3/4"	30066422-219	30685485-006
1"	30067178-219	30685485-004
1-1/8"	30067179-219	30685485-003
1-1/4"	—	30685485-002
1-1/2"	—	30685485-001

<b>Key No. 32 — Pipe Plug</b>
30032808-188

<b>Key No. 33 — Diaphragm Case Subassembly, Includes Upper Dia. Case and Pressure Conn.</b>		
<b>Size</b>	<b>01-9</b>	<b>01-11</b>
	30032546-915	30036166-915

<b>Key No. 34 — Diaphragm</b>					
<b>Size</b>	<b>01-9</b>	<b>01-11</b>	<b>01-13</b>	<b>01-15</b>	<b>01-18</b>
	30067301-001	30685491-004	30033673-002	30033837-002	30033677-002

<b>Key No. 35 — Gasket</b>					
<b>Size</b>	<b>01-9</b>	<b>01-11</b>	<b>01-13</b>	<b>01-15</b>	<b>01-18</b>
	30032734-859	30032722-859	30032584-859	30032721-859	30032720-859
<b>Quantity</b>	2	2	1	1	1

# Nor' East

## SPARE PARTS - TYPE 01 PNEUMATIC ACTUATOR

Key No. 36 — O-Ring					
Size	01-9	01-11	01-13	01-15	01-18
	30032685-196	30354697-011	30032693-196	30032633-196	30033384-196

Key No. 37 — Actuator Stem					
Size	01-9	01-11	01-13	01-15	01-18
	30036425-316	30685490-002	30674544-001	30674548-001	30674511-001

Key No. 38 — Spring Seat					
Size	01-9	01-11	01-13	01-15	01-18
	30049003-200	30036170-200	30032579-200	30032701-200	30032702-200

Key No. 39 — Yoke				
Size	01-9	01-11	01-13	01-15
w/o side mtd. H/W	30033157-200	30033097-200	30042620-200	30039813-200
w/side mtd. H/W	—	30038118-200	30038123-200	30038125-200
Size	01-18 w/2-1/2" Tvl.	01-18 w/3-1/2"	01-24	
w/o side mid. H/W	30069307-200	30069308-200	30047380-200	
w/side mtd. H/W	30038124-200	—	—	

Key No. 40 — Spring Adjuster					
Size	01-9	01-11	01-13	01-15	01-18
	30049012-107	30036171-107	30032583-262	30032761-262	30032761-262

Key No. 41 — Washer			
Size	01-13	01-15	01-18
	30674545-001	30674549-001	30674512-001

Key No. 42 — Cover			
Size	01-13	01-15	01-18
	30033095-200	30033096-200	30033096-200

Key No. 43 — Spring Housing			
Size	01-13	01-15	01-18
	30032580-200	30032723-200	30032724-200

Key No. 44 — Screw, Lower Dia. Case to Yoke - Reverse Acting			
Size	01-13	01-15	01-18
	30009994-262	30007662-262	30007662-262
Qty	4	4	6



**Nor' East**  
**SPARE PARTS - TYPE 01 PNEUMATIC ACTUATOR**

<b>Key No. 45 — Stem Seal Housing</b>			
<b>Size</b>	<b>01-13</b>	<b>01-15</b>	<b>01-18</b>
	30042775-104	30044965-104	30040140-104

<b>Key No. 46 — Stem Seal</b>			
<b>Size</b>	<b>01-13</b>	<b>01-15</b>	<b>01-18</b>
	30042779-262	30039844-450	30040155-262

<b>Key No. 47 — Actuator Stem, SMH</b>			
<b>Size</b>	<b>01-13</b>	<b>01-15</b>	<b>01-18</b>
	30049133-316	30049166-316	30049223-316

<b>Key No. 48 — Pin</b>			
<b>Size</b>	<b>01-13</b>	<b>01-15</b>	<b>01-18</b>
	30032106-264	30032108-264	30032077-264

<b>Key No. 49 — Screw</b>			
<b>Size</b>	<b>01-13</b>	<b>01-15</b>	<b>01-18</b>
	30032583-264	30032761-262	30032761-262

<b>Key No. 50 — Bearing</b>	
Size 01-9 Only	30049006-144

<b>Key No. 51 – Spacer</b>								
<b>01-9</b>	<b>Travel</b>	<b>Qty</b>	<b>01-11</b>	<b>Travel</b>	<b>Qty</b>	<b>01-13</b>	<b>Travel</b>	<b>Qty</b>
30049049-227	9/16"	3	30685492-012	9/16"	3	30049050-227	1-1/4"	4
30049137-227	3/4"	3	30685492-001	3/4"	3			
			30685492-003	1"	3			
			30685492-004	1-1/8"	3			
			30685492-005	1-1/4"	3			

<b>Key No. 52 – Screw, Diaphragm Case to Yoke, Springless Actuator</b>								
<b>01-9</b>	<b>Travel</b>	<b>Qty</b>	<b>01-11</b>	<b>Travel</b>	<b>Qty</b>	<b>01-13</b>	<b>Travel</b>	<b>Qty</b>
30026077-264	9/16"	3	30040806-264	9/16"	3	30009994-262	1-1/4"	4
30026077-264	3/4"	3	30065298-264	3/4"	3			
			30685493-001	1"	3	<b>01-18</b>	<b>Travel</b>	<b>Qty</b>
			30026077-264	1-1/8"	3	30034069-262	2-1/2"	6
			30032586-264	1-1/4"	3	30021642-262	3-1/2"	6

# Nor' East

## SPARE PARTS - TYPE 01 PNEUMATIC ACTUATOR

Key No. 53 – Diaphragm Plates, Springless					
Size	01-9	01-11	01-13	01-15	01-18
Upper	30067303-277	30685482-001	30033927-277	30033928-277	30034041-277
Lower	30067304-277	30685483-001	30037679-277	30037527-277	30038228-277

Key No. 54 – Diaphragm, Springless					
Size	01-9*	01-11	01-13	01-15	01-18
	30037460-801	30685491-004	30034027-801	30033934-801	30032640-801 w/TMH
					30033934-801 w/SMH

\* Size 01-9 w/1" Travel, use 30067300-801

Key No. 55 – Washer					
Size	01-9	01-11	01-13	01-15	01-18
	30685486-001	30685486-000	30674547-001	30674551-001	30674554-001

Key No. 56 – Stem - Springless					
Size	01-9	01-11	01-13	01-15	01-18
w/o SMH	30066425-316	30685490-001	30674546-001	30674550-001	30674553-001
w/SMH	—	—	30682876-001	30674584-001	30674555-001
					30674552-001*

\* Size 01-18 w/o SMH w/3-1/2" Travel

Key No. 57 – Yoke					
Size	01-9	01-11	01-13	01-15	01-18
w/o SMH	30033157-200	30033097-200	30042620-200	30039813-200	30069307-200
w/SMH	—	30038118-200	30038123-200	30038125-200	30038124-200
					30069308-200*

\* Size 01-18 w/o SMH w/3-1/2" Travel

Key No. 58 – Stem Seal Housing - Springless			
Size	01-13	01-15	01-18
	30064639-104	30044965-104	30040140-104

Key No. 59 — Stem Head					
Size	01-9	01-11	01-13	01-15	01-18
	30046472-283	30685246-001	30685246-001	30046786-200	30046786-200

Key No. 60 – Bearing T.M.H.		
Size	01-9, 01-11, 01-13	01-15, 01-18
	30046489-262	30046785-262

**Nor' East**  
**SPARE PARTS - TYPE 01 PNEUMATIC ACTUATOR**

<b>Key No. 61 – Snap Ring</b>		
Size	01-9, 01-11, 01-13	01-15, 01-18
	30046487-262	30040688-262

<b>Key No. 62 — Plain Bushing</b>
30046484-104

<b>Key No. 63 — Stem O-Ring</b>
30046485-837

<b>Key No. 64 – Nut</b>		
Size	01-9, 01-11, 01-13	01-15, 01-18
	30046687-262	30046776-262

<b>Key No. 65 — Handwheel TMH</b>				
Size	01-9, 01-11	01-13	01-15	01-18
	30046477-202	30046478-202	30046779-202	30045897-250

<b>Key No. 66 — Screw TMH</b>		
Size	01-9, 01-11, 01-13	01-15, 01-18
	30020120-262	30021642-262

<b>Key No. 67 — Direction Plate</b>		
Size	01-9, 01-11, 01-13	01-15, 01-18
	30046491 -112	30028987-112

<b>Key No. 68 — Manual Operator Stem</b>				
Size	01-9, 01-11	01-13	01-15	01-18
	30046482-104	30046483-104	30046789-316	30046787-316

<b>Key No. 69 – Case Subassembly, Includes Upper Case and Housing</b>			
Size	01-9	01-11	01-13
	30046690-928	30046689-928	30046688-928

<b>Key No. 70 — Housing O-Ring</b>
30046486-837

<b>Key No. 71 — Washer</b>			
Size	01-9, 01-11, 01-13	01-15	01-18
	30046490-262	30046773-262	30017208-262
Qty	2	2	1

# Nor' East

## SPARE PARTS - TYPE 01 PNEUMATIC ACTUATOR

---

Key No. 72 – Snap Ring		
Size	01-9, 01-11, 01-13	01-15, 01-18
	30046488-262	30045917-262

Key No. 73 – Screw		
Size	01-15	01-18
	30021642-262	30021642-262
Qty	9	13

Key No. 74 – O-Ring	
Size	01-9, 01-11, 01-13, 01-15, 01-18
	30040681-196

Key No. 75 – Bushing	
Size	01-18
	30046782-104

Key No. 76 – Stem Seal	
Size	01-15, 01-18
	30046781-262

Key No. 77 – Yoke TMH		
Size	01-15	01-18
	30046791-200	30045893-200

Key No. 78 – Bushing	
Size	01-15, 01-18
	30046777-104

Key No. 79 – Key		
Size	01-15	01-18
	30040064-262	30040064-262
Qty	1	2

Key No. 80 – Nut	
Size	01-15, 01-18
	30045890-276

Key No. 81 – Washer	
Size	01-18
	30046773-262

Key No. 82 – Upper Diaphragm Case					
Size	01-9	01-11	01-13	01-15	01-18
	(See Key 69)	(See Key 69)	(See Key 69)	30032479-277	30032477-277

<b>Key No. 83 – Hook Bolt</b>		
<b>Size</b>	<b>01-11, 01-13</b>	<b>01-15, 01-18</b>
	30037869-264	30037870-262
<b>Qty</b>	2	2

<b>Key No. 84 – Screw</b>	
30020231-264	Qty 4

<b>Key No. 85 – Washer</b>	
30020103-322	Qty 4

<b>Key No. 86 – Washer</b>	
30020157-264	Qty 2

<b>Key No. 87 – Bearing</b>	
30033320-264	Qty 2

<b>Key No. 88 – Bushing</b>	
30038133-276	Qty 2

<b>Key No. 89 – Jack Screw</b>		
<b>Size</b>	<b>01-11, 01-13</b>	<b>01-15, 01-18</b>
	30037799-105	30037798-105

<b>Key No. 90 – Traversing Nut</b>		
<b>Size</b>	<b>01-11, 01-13</b>	<b>01-15, 01-18</b>
	30037793-239	30037792-239

<b>Key No. 91 – Handwheel SMH</b>			
<b>Size</b>	<b>01-11</b>	<b>01-13</b>	<b>01-15, 01-18</b>
	30034851-250	30034852-250	30033358-250

<b>Key No. 92 – Screw</b>	
30020085-264	

<b>Key No. 93 – Screw</b>	
30028081-264	Qty 2

<b>Key No. 94 – Nut</b>	
30037797-193	

# Nor' East

## SPARE PARTS - TYPE 01 PNEUMATIC ACTUATOR

---

<b>Key No. 95– Key</b>
30033336-264

<b>Key No. 96– Nut</b>
30020234-264

<b>Key No. 97– Indicator Plate Lock</b>
30037816-112

<b>Key No. 98– Handle</b>
30038110-225

<b>Key No. 99– Locking Pin</b>
30037794-316

<b>Key No. 100– Pin</b>
30035245-264

<b>Key No. 101 – Housing</b>			
<b>Size</b>	<b>01-11, 01-13</b>	<b>01-15</b>	<b>01-18</b>
	30037873-200	30043856-200	30037874-200

<b>Key No. 102 – Screw</b>			
<b>Size</b>	<b>01-11</b>	<b>01-13, 01-18</b>	<b>01-15</b>
	30026078-264	30026078-262	30034989-262
<b>Qty</b>	2	2	2

<b>Key No. 103 – Screw</b>	
30020106-264	Qty 2

<b>Key No. 104 – Washer</b>	
30020103-322	Qty 2

<b>Key No. 105 – Spacer</b>	
30037878-276	Qty 2

<b>Key No. 106– Spacer</b>
30037791-276

<b>Key No. 107– Screw</b>
30022912-264

# Nor' East

## SPARE PARTS - TYPE 01 PNEUMATIC ACTUATOR

---

<b>Key No. 108 – Washer</b>		
<b>Size</b>	<b>01-11, 01-13</b>	<b>01-15, 01-18</b>
	30034927-262	30021604-262
<b>Qty</b>	2	2

<b>Key No. 109– Screw</b>
30043827-264

<b>Key No. 110– Alemite Fitting</b>
20043828-454

<b>Key No. 111 – Bell Crank</b>		
<b>Size</b>	<b>01-11, 01-13</b>	<b>01-15, 01-18</b>
	30038194-540	30033768-540
<b>Qty</b>	2	2

<b>Key No. 112 – Nut</b>	
30020111-264	Qty 4

<b>Key No. 113 – Washer</b>	
30020103-262	Qty 4

<b>Key No. 114– Pressure Regulator</b>
30352196-001

<b>Key No. 115– Mounting Bracket</b>
30040006-193

<b>Key No. 116 – Screw</b>	
30033049-264	Qty 2

<b>Key No. 117– Nipple</b>
30024890-112

<b>Key No. 118– Gauge</b>
30065499-450

<b>Key No. 119– Tee</b>
30024893-112

<b>Key No. 120– Set Screw</b>
30020227-262

<b>Key No. 121– Key</b>
30040064-262

<b>Key No. 122 – Screw</b>	
30040050-264	Qty 6

# Nor' East

## SPARE PARTS - TYPE 01 PNEUMATIC ACTUATOR

---

### Guarantee

Products, auxiliaries and parts thereof, of Nor'East Controls' manufacture, are guaranteed for a period of one year from the date of shipment against defective workmanship and material only, when properly installed, operated and serviced in accordance with Nor'East Controls' recommendations. Replacement for items of Nor'East Controls' manufacture will be made free of charge if proved to be defective within such time. No claim for special or consequential damages, transportation, or labor shall be allowed. Purchaser shall be solely responsible for determining suitability for use and in no event shall Nor'East Controls be liable in this respect. Equipment or parts manufactured by others but furnished by Nor'East Controls will be repaired or replaced, only to the extent provided in the original manufacturer's warranty to Nor'East Controls. Nor'East Controls does not guarantee resistance to corrosion, erosion, abrasion or other sources of failure, nor does Nor'East Controls guarantee a minimum length of service. Failure of the purchaser to give prompt written notice of any alleged defect under this guarantee forthwith upon its discovery, or use and possession thereof after an attempt has been made and completed by someone other than Nor'East Controls or an authorized representative to remedy defects therein, or failure to return products or parts for replacement as herein provided, of failure to install, operate, and maintain said products or parts according to instructions provided by Nor'East Controls, of failure to pay the entire contract price when due, shall be a waiver of all rights under these representations.

The foregoing guarantee shall be null and void, if, after shipment from our factory, the item is modified in any way or component of another manufacturer, such as but not limited to; an actuator is attached to the item by valves & controls other than a Nor'East Controls

Factory Service Personnel. All orders accepted shall be deemed accepted subject to this guarantee, which shall be exclusive of any other previous guarantee, and this shall be the only effective guarantee or warranty binding on Nor'East Controls, anything to the contrary contained in the purchase order, or represented by any agent or employee of Nor'East Controls, in writing or otherwise, notwithstanding, including but not limited to implied warranties.

THE FOREGOING OBLIGATIONS ARE IN LIEU OF ALL OTHER OBLIGATIONS AND LIABILITIES INCLUDING WARRANTIES OF FITNESS OR MERCHANTABILITY OR OTHERWISE, EXPRESSED OR IMPLIED IN FACT OR BY LAW, AND STATE NOR'EAST CONTROLS AND EXCLUSIVE LIABILITY AND PURCHASER'S EXCLUSIVE REMEDY FOR ANY CLAIM IN CONNECTION WITH THIS SALE OR FURNISHING OF SERVICES, GOODS, OR PARTS, THEIR OWN DESIGN, SUITABILITY FOR USE, INSTALLATION OR OPERATION.

### **Limitation of Liability**

In no event shall Nor'East Controls be liable for any direct, indirect, special or consequential damages whatsoever, and Nor'East Controls' liability, under no circumstances, will exceed the contract price for the goods and/or services for which liability is claimed. Any action for breach of contract must be commenced within 1 year after the cause of the action has occurred.

1000 Riverside Street, Portland, Maine 04103 Ph: 207-210-6633 Fax: 207-210-6634

### Sales and Service

Nor' East Controls representatives are located in major cities throughout the world.

For the name of the representative nearest you, contact:

**Web site:**[www.allagashinternational.com](http://www.allagashinternational.com) **E-Mail:**[sales@allagashinternational.com](mailto:sales@allagashinternational.com)

Nor' East reserves the right to incorporate our latest design and material changes without notice or obligation. Design features, materials of construction and dimensional data, as described in this bulletin, are provided for your information only and should not be relied upon unless confirmed in writing by Nor' East Controls. Certified drawings are available upon request.





