

Instruction
SP-8600_
8900-1NE
December 2010

NOR'EAST

— CONTROLS, INC.

A DIVISION OF ALLGASH INTERNATIONAL, INC.



Spare Parts

SERIES 8600 AND 8900 MIXING AND DIVERTING, GLOBE VALVES

Previously manufactured by Dezurik® and Honeywell®

Nor' East

2-1/2" – 8" 8600 and 8900 Series Mixing and Diverting Globe Valves

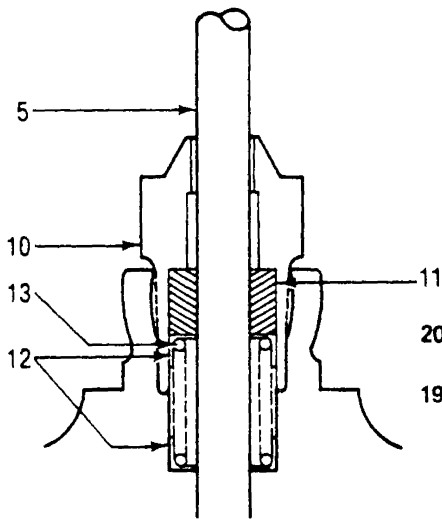
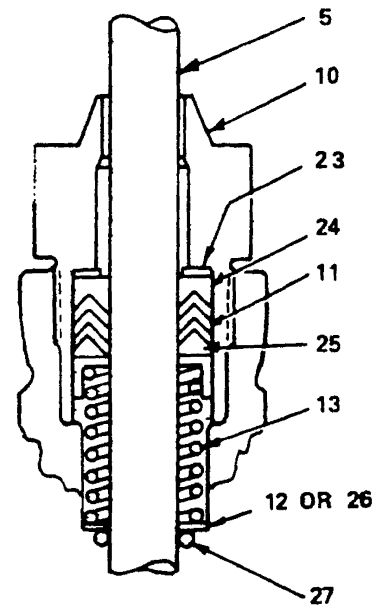


Figure 1-a. Packing Assembly for 125 lb Valve Rating, 2-1/2, 3, 4, 5 and 6 Inch Valves



*Figure 1-b. Packing Assembly for 250 lb Valve Rating, 2-1/2, 3, 4, 5 and 6 Inch Valves

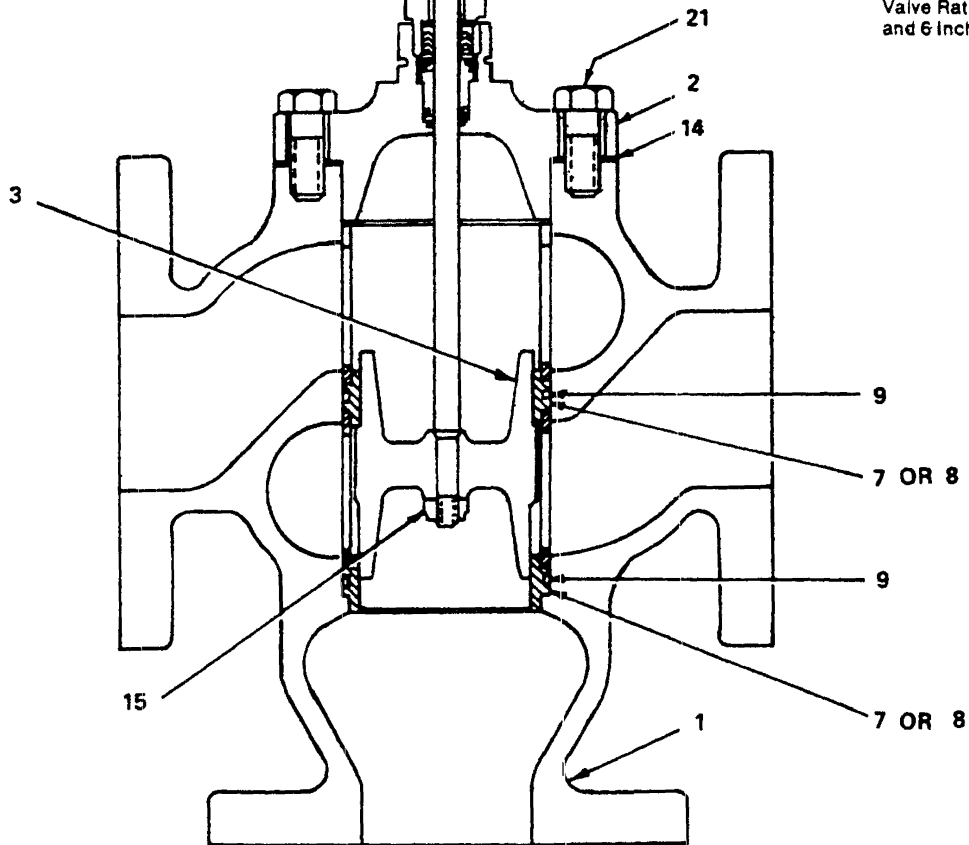


Figure 1. Typical Valve Body Arrangement for Series 8600 and 8900 Valves for Mixing Valves

Figure 1-a-b: 2-1/2" – 8" Valves

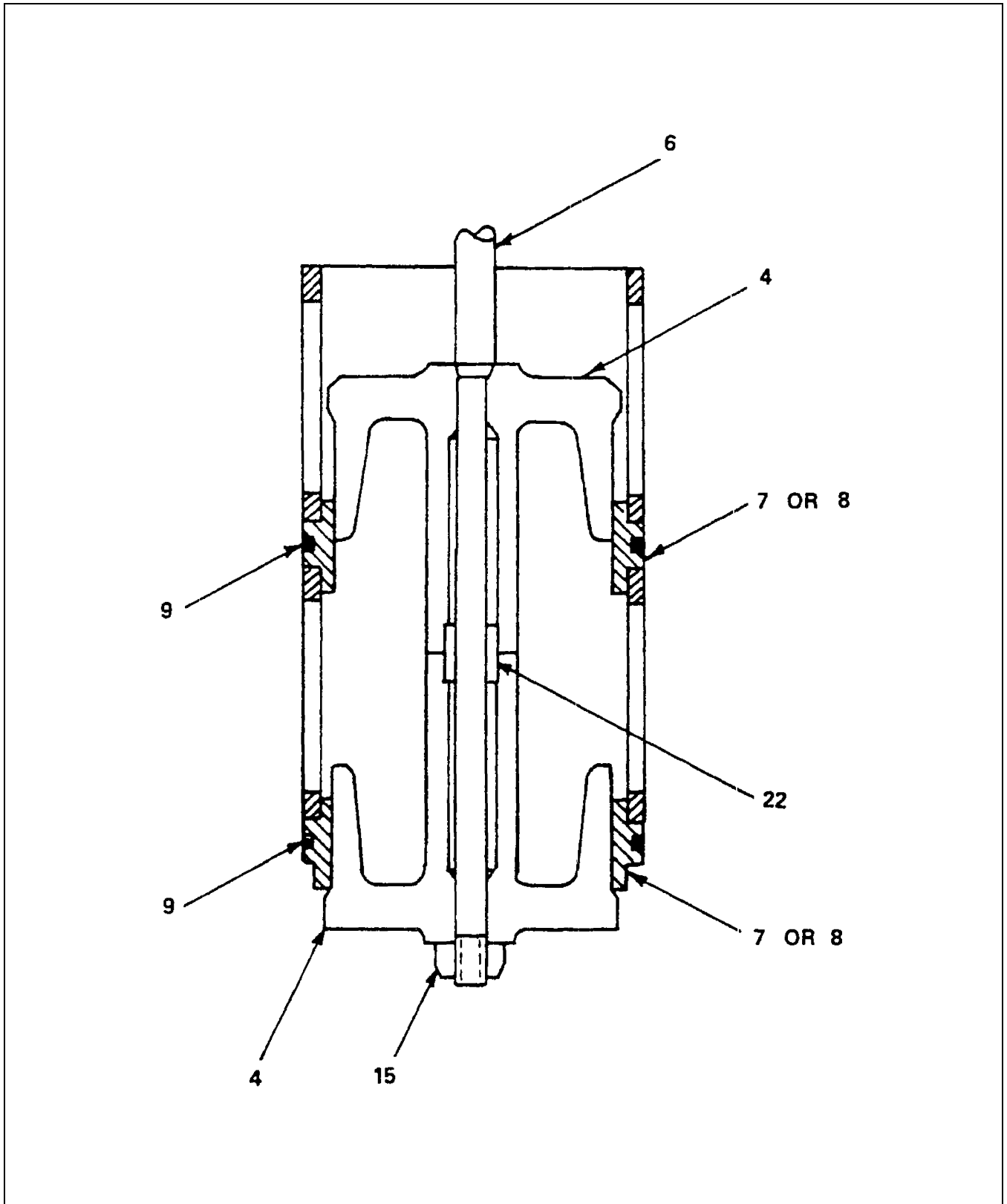


Figure 1-1: Valve Stem Assembly for Diverting Valves

Nor' East

2-1/2" – 8" 8600 and 8900 Series Mixing and Diverting Globe Valves

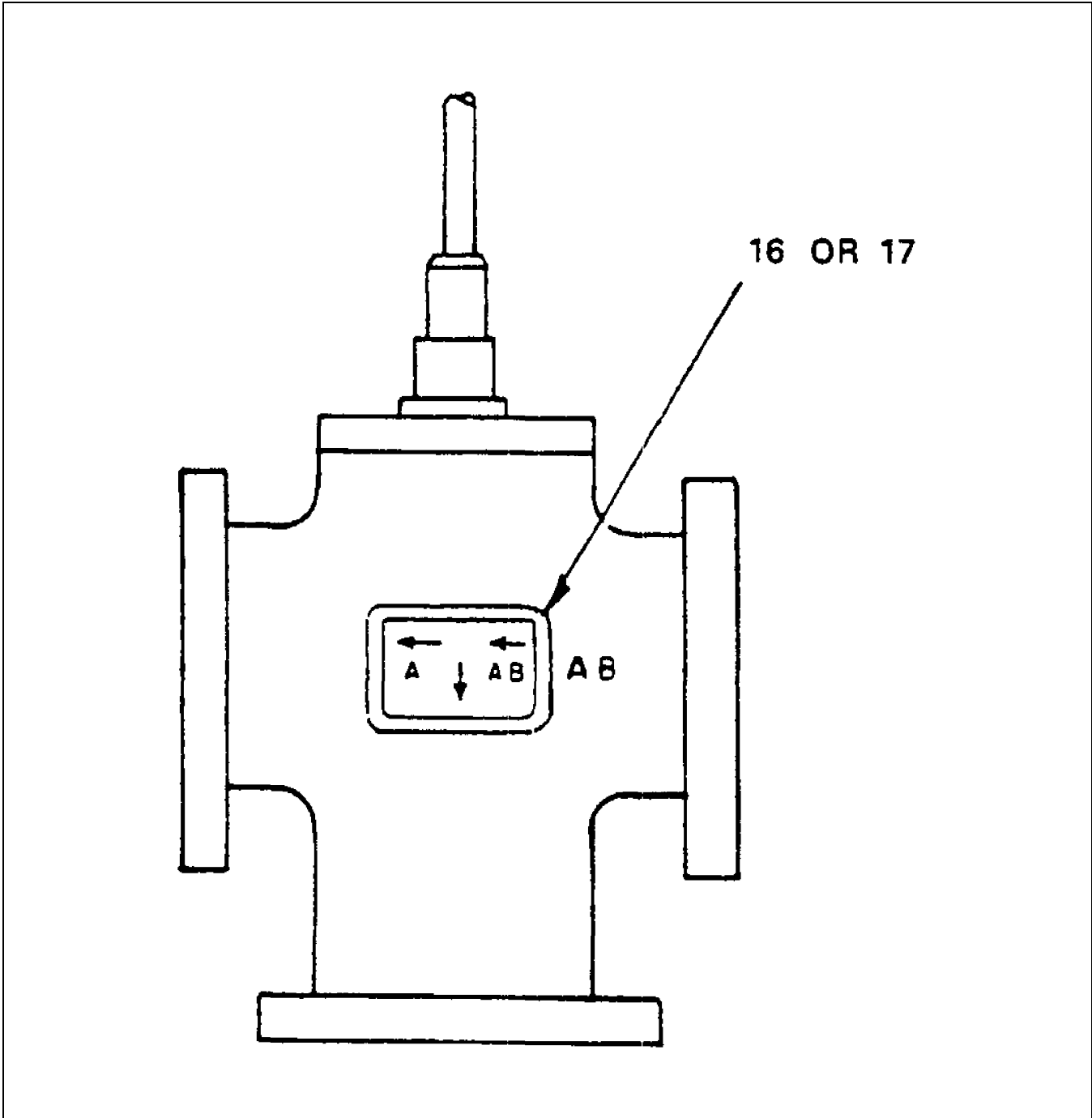


Figure 1-2: Location of Flow Plate on Valve

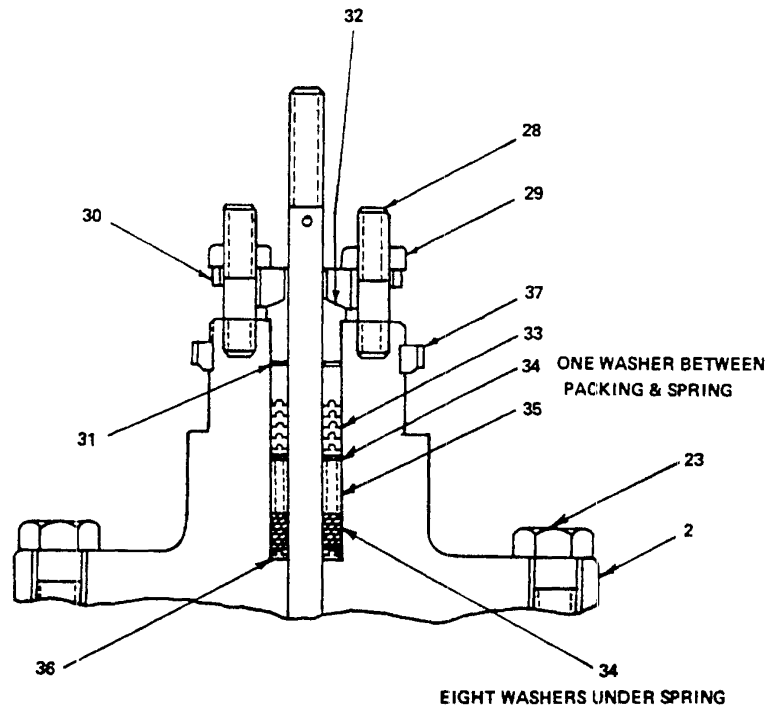


Figure 1-3. Spring-Loaded Packing Assembly for 8-Inch Valves

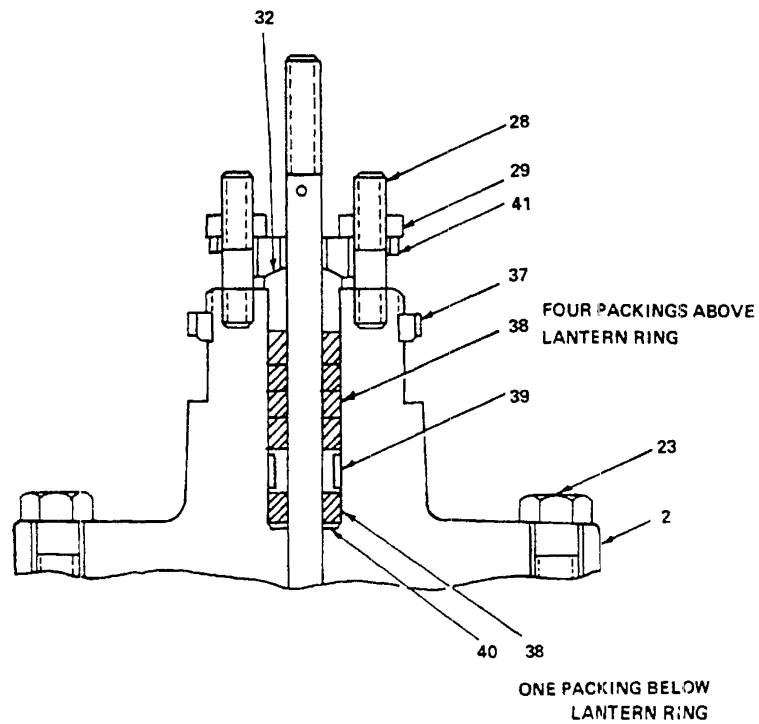
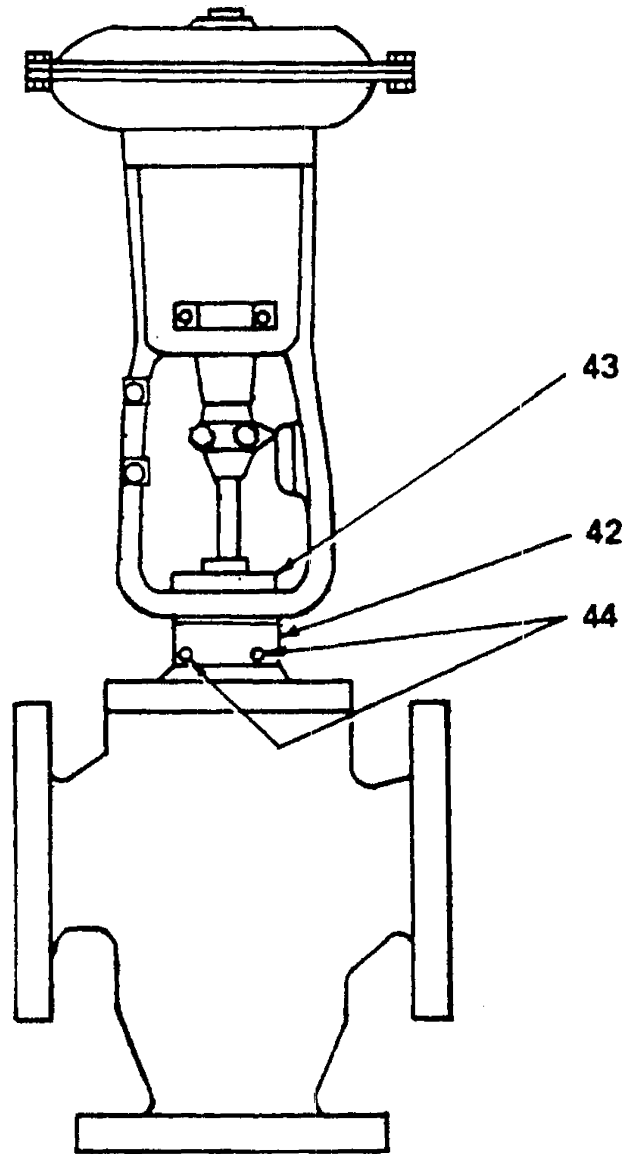


Figure 1-4. Teflon Asbestos Packing Assembly for 8-Inch Valves

Figure 1-3 & 1-4: Packing used on 8" Valves

Nor' East

2-1/2" – 8" 8600 and 8900 Series Mixing and Diverting Globe Valves



NOTE: APPLICABLE FOR 4, 5 AND 6-INCH VALVES ONLY

Figure 2: Parts required to attach Size 13 Actuator to 8601 and 8901 Valves

2-1/2" – 8" 8600 and 8900 Series Mixing and Diverting Globe Valves

Key No. 1 – Body

Rating	Valve Size					
	2-1/2"	3"	4"	5"	6"	8"
125 lb.	30067822-200	30067823-200	30067824-200	30678769-001	30678770-001	30069127-200
250 lb.	30682988-001	30682989-001	30682990-001	30682991-001	30682992-001	30682993-001

Key No. 2 – Bonnet

Rating	Valve Size					
	2-1/2"	3"	4"	5"	6"	8"
125 & 250 lb.	30067827-200	30067828-200	30067829-200	30067830-200	30067831-200	30069128-200

Key No. 3 – Valve Plug (Mixing Valve only)

Rating	Valve Size					
	2-1/2"	3"	4"	5"	6"	8"
125 & 250 lb.	30067832-760	30067833-760	30067834-760	30067835-100	30067836-100	30069130-100

Key No. 4 – Valve Plug (Diverting Valve only)

Rating	Valve Size					
	2-1/2"	3"	4"	5"	6"	8"
125 & 250 lb.	30067866-760 (Qty 2)	30067867-760 (Qty 2)	30067868-760 (Qty 2)	30067869-100 (Qty 2)	30067870-100 (Qty 2)	30069129-100 (Qty 2)

Key No. 5 – Stem (Mixing Valve only)

Rating	Valve Size					
	2-1/2"	3"	4"	5"	6"	8"
125 & 250 lb.	30067837-316	30067838-316	30067839-316	30067840-316	30067841-316	30069132-316

Key No. 6 – Stem (Diverting Valve only)

Rating	Valve Size					
	2-1/2"	3"	4"	5"	6"	8"
125 & 250 lb.	30067871-316	30067872-316	30067873-316	30067874-316	30067875-316	30069131-316

Nor' East

2-1/2" – 8" 8600 and 8900 Series Mixing and Diverting Globe Valves

Key No. 7 – Seat Ring Subassembly

Rating	Valve Size					
	2-1/2"	3"	4"	5"	6"	8"
125 & 250 lb.	30067842-905 (Qty 2)	30067843-905 (Qty 2)	30067844-905 (Qty 2)	N/A	N/A	N/A
Consists of						
Seat Ring	30067845-518 (Qty 2)	30067846-518 (Qty 2)	30067847-518 (Qty 2)	N/A	N/A	N/A
Cage	30067850-187 (Qty 2)	30067851-187 (Qty 2)	30067852-187 (Qty 2)	N/A	N/A	N/A

Key No. 8 – Seat Ring

Rating	Valve Size					
	2-1/2"	3"	4"	5"	6"	8"
125 & 250 lb.	N/A	N/A	N/A	30685316-001 (Qty 2)	30067849-100 (Qty 2)	30069135-100 (Qty 2)

Key No. 9 – O-ring

Rating	Valve Size					
	2-1/2"	3"	4"	5"	6"	8"
125 & 250 lb.	30684011-001 (Qty 2)	30067531-891 (Qty 2)	30067533-891 (Qty 2)	30067535-891 (Qty 2)	30067856-891 (Qty 2)	30069137-891 (Qty 2)

Key No. 10 – Packing Box Nut

Rating	Valve Size					
	2-1/2"	3"	4"	5"	6"	8"
125 lb.	30067857-107	30067857-107	30067858-001	30067858-001	30067858-001	N/A
250 lb.	30683374-001	30683374-001	30683135-002	30683135-002	30683135-002	N/A

Key No. 11 – Packing

Rating	Valve Size					
	2-1/2"	3"	4"	5"	6"	8"
125 lb.	30041035-854 (Qty 4)	30041035-854 (Qty 4)	30041036-854 (Qty 5)	30041036-854 (Qty 5)	30041036-854 (Qty 5)	N/A
250 lb.	30685565-002 (Qty 3)	30685565-002 (Qty 3)	30685565-003 (Qty 3)	30685565-003 (Qty 3)	30685565-003 (Qty 3)	N/A

2-1/2" – 8" 8600 and 8900 Series Mixing and Diverting Globe Valves

Key No. 12 – Spring Flange

Rating	Valve Size					
	2-1/2"	3"	4"	5"	6"	8"
125 & 250 lb.	30041086-107	30041086-107	30041087-107 (Qty 2)	30041087-107 (Qty 2)	30041087-107 (Qty 2)	N/A

Key No. 13 – Spring

Rating	Valve Size					
	2-1/2"	3"	4"	5"	6"	8"
125 & 250 lb.	30041084-218	30041084-218	30041085-218	30041085-218	30041085-218	N/A

Key No. 14 – Gasket

Rating	Valve Size					
	2-1/2"	3"	4"	5"	6"	8"
125 & 250 lb.	30067859-859	30067860-859	30067861-859	30067862-859	30067863-859	30069134-859

Key No. 15 – Nut

Rating	Valve Size					
	2-1/2"	3"	4"	5"	6"	8"
125 & 250 lb.	30048312-322	30048312-322	30067756-322	30067756-322	30067756-322	30069136-322

Key No. 16 – Plate, Indicator Flow (Mixing Valve only)

Rating	Valve Size					
	2-1/2"	3"	4"	5"	6"	8"
125 lb.	30681590-001	30681590-002	30681590-003	30681590-004	30681590-005	30681590-013
250 lb.	30681590-015	30681590-016	30681590-017	30681590-018	30681590-019	30681590-027

Key No. 17 – Plate, Indicator Flow (Diverting Valve only)

Rating	Valve Size					
	2-1/2"	3"	4"	5"	6"	8"
125 lb.	30681590-007	30681590-008	30681590-009	30681590-010	30681590-011	30681590-014
250 lb.	30681590-021	30681590-022	30681590-023	30681590-024	30681590-025	30681590-028

Nor' East

2-1/2" – 8" 8600 and 8900 Series Mixing and Diverting Globe Valves

Key No. 18 – Stem Head

Rating	Valve Size					
	2-1/2"	3"	4"	5"	6"	8"
125 & 250 lb.	30041088-107	30041088-107	30041089-235	30041089-235	30041089-235	N/A

Key No. 19 – Screw, Socket Head, 8-32 x 3/16

Rating	Valve Size					
	2-1/2"	3"	4"	5"	6"	8"
125 & 250 lb.	30021181-262	30021181-262	30021181-262	30021181-262	30021181-262	N/A

Key No. 20 – Screw

Rating	Valve Size					
	2-1/2"	3"	4"	5"	6"	8"
125 & 250 lb.	30041091-262	30041091-262	30045575-322	30045575-322	30045575-322	N/A

Key No. 21 – Screw

Rating	Valve Size					
	2-1/2"	3"	4"	5"	6"	8"
125 & 250 lb.	30007815-264 (Qty 4)	30007815-264 (Qty 6)	30041083-264 (Qty 6)	30041083-264 (Qty 8)	30064001-264 (Qty 8)	30027317-264 (Qty 8)

Key No. 22 – Bushing (Diverting Valve only)

Rating	Valve Size					
	2-1/2"	3"	4"	5"	6"	8"
125 & 250 lb.	30067876-107	30067876-107	30067877-107	30067877-107	30067877-107	30069133-107

Key No. 23 – Seal, Packing

Rating	Valve Size					
	2-1/2"	3"	4"	5"	6"	8"
250 lb.	30682506-002	30682506-002	30682506-003	30682506-003	30682506-003	N/A

Key No. 24 – Packing, Female Adaptor

Rating	Valve Size					
	2-1/2"	3"	4"	5"	6"	8"
250 lb.	30685567-002	30685567-002	30685567-003	30685567-003	30685567-003	N/A

2-1/2" – 8" 8600 and 8900 Series Mixing and Diverting Globe Valves

Key No. 25 – Packing, Male Adaptor

Rating	Valve Size					
	2-1/2"	3"	4"	5"	6"	8"
250 lb.	30685566-002	30685566-002	30685566-003	30685566-003	30685566-003	N/A

Key No. 26 – Washer

Rating	Valve Size					
	2-1/2"	3"	4"	5"	6"	8"
250 lb.	30078905-000	30078905-000	N/A	N/A	N/A	N/A

Key No. 27 – O-ring

Rating	Valve Size					
	2-1/2"	3"	4"	5"	6"	8"
250 lb.	30685440-026	30685440-026	30685440-025	30685440-025	30685440-025	N/A

Key No. 28 – Stud

Rating	Valve Size					
	2-1/2"	3"	4"	5"	6"	8"
125 & 250 lb.	N/A	N/A	N/A	N/A	N/A	30037244-271 (Qty 2)

Key No. 29 – Nut

Rating	Valve Size					
	2-1/2"	3"	4"	5"	6"	8"
125 & 250 lb.	N/A	N/A	N/A	N/A	N/A	30032534-272 (Qty 2)

Key No. 30 – Packing Flange

Rating	Valve Size					
	2-1/2"	3"	4"	5"	6"	8"
125 & 250 lb.	N/A	N/A	N/A	N/A	N/A	30065377-392

Key No. 31 – Upper Stem Wiper

Rating	Valve Size					
	2-1/2"	3"	4"	5"	6"	8"
125 & 250 lb.	N/A	N/A	N/A	N/A	N/A	30065392-854

Nor' East

2-1/2" – 8" 8600 and 8900 Series Mixing and Diverting Globe Valves

Key No. 32 – Packing Follower

Rating	Valve Size					
	2-1/2"	3"	4"	5"	6"	8"
125 & 250 lb.	N/A	N/A	N/A	N/A	N/A	30037243-303

Key No. 33 – Spring-Loaded Packing

Rating	Valve Size					
	2-1/2"	3"	4"	5"	6"	8"
125 & 250 lb.	N/A	N/A	N/A	N/A	N/A	30065401-936

Key No. 34 – Washer

Rating	Valve Size					
	2-1/2"	3"	4"	5"	6"	8"
125 & 250 lb.	N/A	N/A	N/A	N/A	N/A	30065410-316 (Qty 9)

Key No. 35 – Spring, Packing

Rating	Valve Size					
	2-1/2"	3"	4"	5"	6"	8"
125 & 250 lb.	N/A	N/A	N/A	N/A	N/A	30065380-461

Key No. 36 – Lower Stem Wiper

Rating	Valve Size					
	2-1/2"	3"	4"	5"	6"	8"
125 & 250 lb.	N/A	N/A	N/A	N/A	N/A	30065418-862

Key No. 37 – Nut, Yoke Lock

Rating	Valve Size					
	2-1/2"	3"	4"	5"	6"	8"
125 & 250 lb.	N/A	N/A	N/A	N/A	N/A	30036963-392

Key No. 38 – Packing

Rating	Valve Size					
	2-1/2"	3"	4"	5"	6"	8"

2-1/2" – 8" 8600 and 8900 Series Mixing and Diverting Globe Valves

125 lb.	N/A	N/A	N/A	N/A	N/A	30043548-840 (Qty 5)
---------	-----	-----	-----	-----	-----	-------------------------

Key No. 39 – Lantern Ring

Rating	Valve Size					
	2-1/2"	3"	4"	5"	6"	8"
125 lb.	N/A	N/A	N/A	N/A	N/A	30033110-303

Key No. 40 – Retaining Ring, Packing

Rating	Valve Size					
	2-1/2"	3"	4"	5"	6"	8"
125 lb.	N/A	N/A	N/A	N/A	N/A	30011491-316

Key No. 41 – Packing Flange

Rating	Valve Size					
	2-1/2"	3"	4"	5"	6"	8"
125 lb.	N/A	N/A	N/A	N/A	N/A	30036960-392

Key No. 42 – Bonnet Adaptor

Rating	Valve Size					
	2-1/2"	3"	4"	5"	6"	8"
125 & 250 lb.	N/A	N/A	30686639-001	30686639-001	30686639-001	N/A

Key No. 43 – Nut, Yoke Lock

Rating	Valve Size					
	2-1/2"	3"	4"	5"	6"	8"
125 & 250 lb.	N/A	N/A	30036962-392	30036962-392	30036962-392	N/A

Key No. 44 – Set Screw

Rating	Valve Size					
	2-1/2"	3"	4"	5"	6"	8"
125 & 250 lb.	N/A	N/A	30021911-262 (Qty 2)	30021911-262 (Qty 2)	30021911-262 (Qty 2)	N/A

Nor' East

2-1/2" – 8" 8600 and 8900 Series Mixing and Diverting Globe Valves

Guarantee

Products, auxiliaries and parts thereof, of Nor'East Controls' manufacture, are guaranteed for a period of one year from the date of shipment against defective workmanship and material only, when properly installed, operated and serviced in accordance with Nor'East Controls' recommendations. Replacement for items of Nor'East Controls' manufacture will be made free of charge if proved to be defective within such time. No claim for special or consequential damages, transportation, or labor shall be allowed. Purchaser shall be solely responsible for determining suitability for use and in no event shall Nor'East Controls be liable in this respect. Equipment or parts manufactured by others but furnished by Nor'East Controls will be repaired or replaced, only to the extent provided in the original manufacturer's warranty to Nor'East Controls. Nor'East Controls does not guarantee resistance to corrosion, erosion, abrasion or other sources of failure, nor does Nor'East Controls guarantee a minimum length of service. Failure of the purchaser to give prompt written notice of any alleged defect under this guarantee forthwith upon its discovery, or use and possession thereof after an attempt has been made and completed by someone other than Nor'East Controls or an authorized representative to remedy defects therein, or failure to return products or parts for replacement as herein provided, of failure to install, operate, and maintain said products or parts according to instructions provided by Nor'East Controls, of failure to pay the entire contract price when due, shall be a waiver of all rights under these representations.

The foregoing guarantee shall be null and void, if, after shipment from our factory, the item is modified in any way or component of another manufacturer, such as but not limited to; an actuator is attached to the item by valves & controls other than a Nor'East Controls

Factory Service Personnel. All orders accepted shall be deemed accepted subject to this guarantee, which shall be exclusive of any other previous guarantee, and this shall be the only effective guarantee or warranty binding on Nor'East Controls, anything to the contrary contained in the purchase order, or represented by any agent or employee of Nor'East Controls, in writing or otherwise, notwithstanding, including but not limited to implied warranties.

THE FOREGOING OBLIGATIONS ARE IN LIEU OF ALL OTHER OBLIGATIONS AND LIABILITIES INCLUDING WARRANTIES OF FITNESS OR MERCHANTABILITY OR OTHERWISE, EXPRESSED OR IMPLIED IN FACT OR BY LAW, AND STATE NOR'EAST CONTROLS AND EXCLUSIVE LIABILITY AND PURCHASER'S EXCLUSIVE REMEDY FOR ANY CLAIM IN CONNECTION WITH THIS SALE OR FURNISHING OF SERVICES, GOODS, OR PARTS, THEIR OWN DESIGN, SUITABILITY FOR USE, INSTALLATION OR OPERATION.

Limitation of Liability

In no event shall Nor'East Controls be liable for any direct, indirect, special or consequential damages whatsoever, and Nor'East Controls' liability, under no circumstances, will exceed the contract price for the goods and/or services for which liability is claimed. Any action for breach of contract must be commenced within 1 year after the cause of the action has occurred.

1000 Riverside Street, Portland, Maine 04103

Ph: 207-781-8831 Fax: 207-781-8830

Sales and Service

Nor' East Controls representatives are located in major cities throughout the world.

For the name of the representative nearest you, contact:

Web site:www.allagashinternational.com **E-Mail:**sales@allagashinternational.com

Nor' East reserves the right to incorporate our latest design and material changes without notice or obligation. Design features, materials of construction and dimensional data, as described in this bulletin, are provided for your information only and should not be relied upon unless confirmed in writing by Nor' East Controls. Certified drawings are available upon request.