

Instruction
SP-Type01A-1NE
December 2010

NOR'EAST

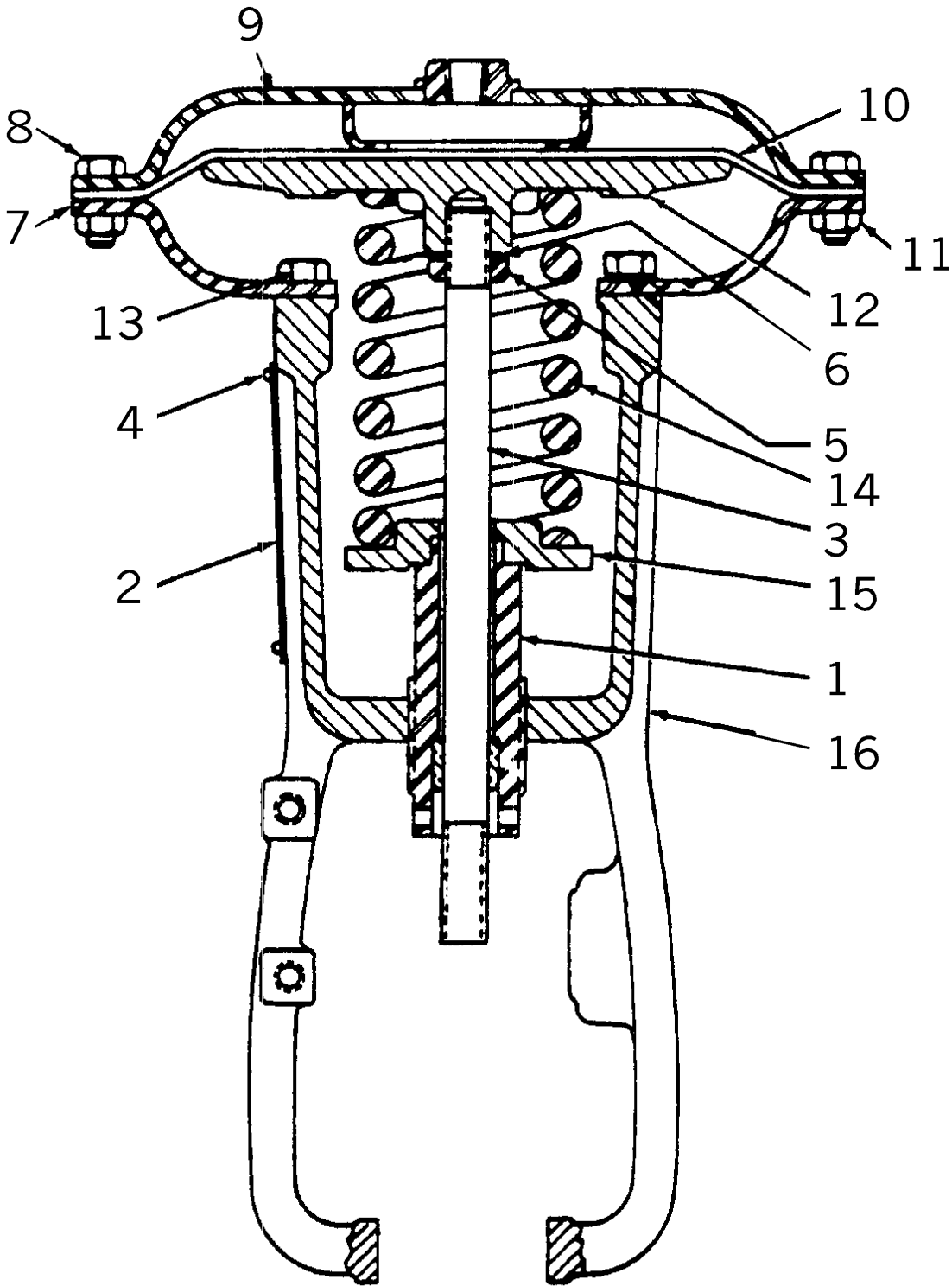
— CONTROLS, INC.
A DIVISION OF ALLGASH INTERNATIONAL, INC.



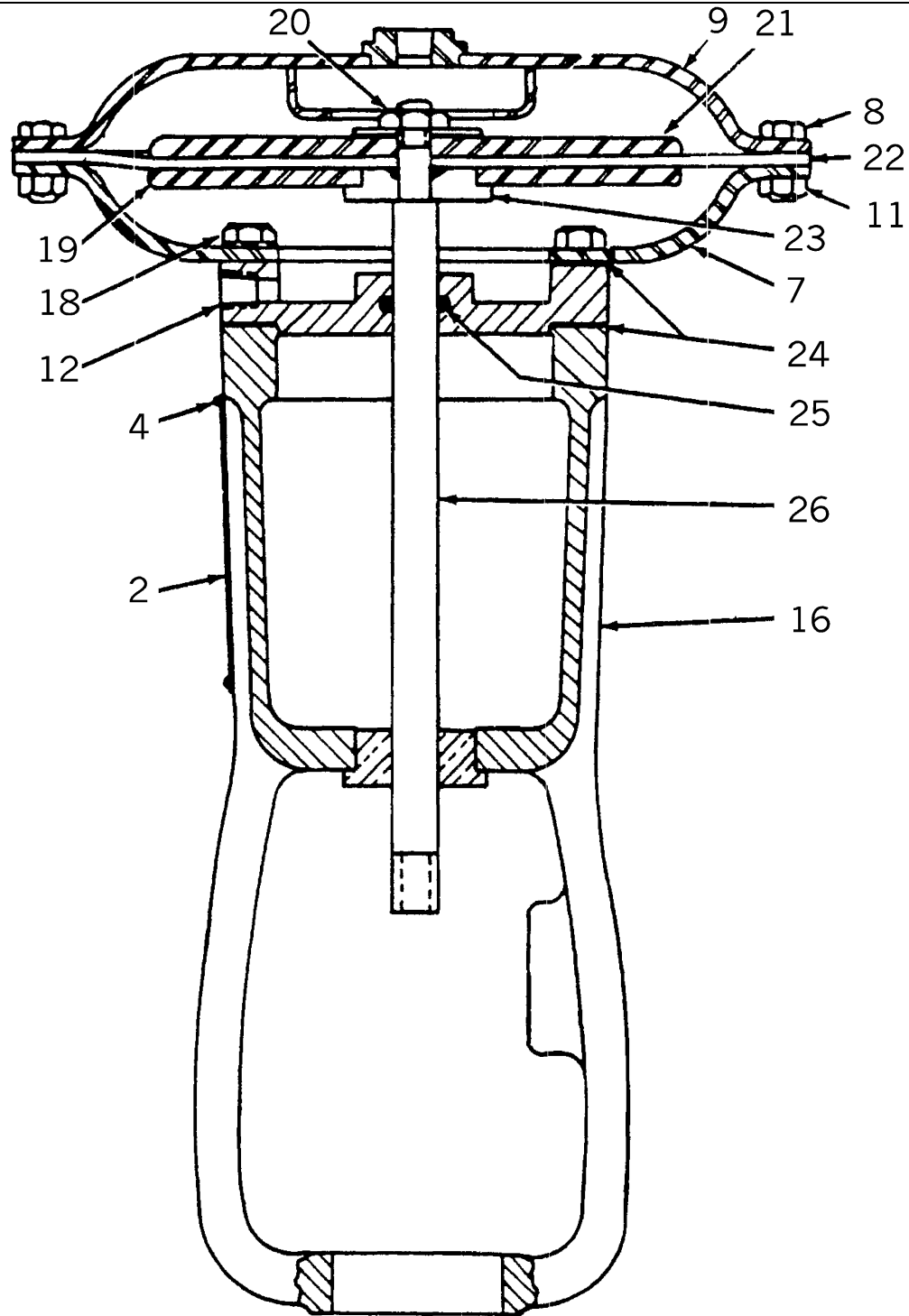
Spare Parts

TYPE 01 AIR-O-MOTOR ACTUATOR,
FUW GLOBE VALVES

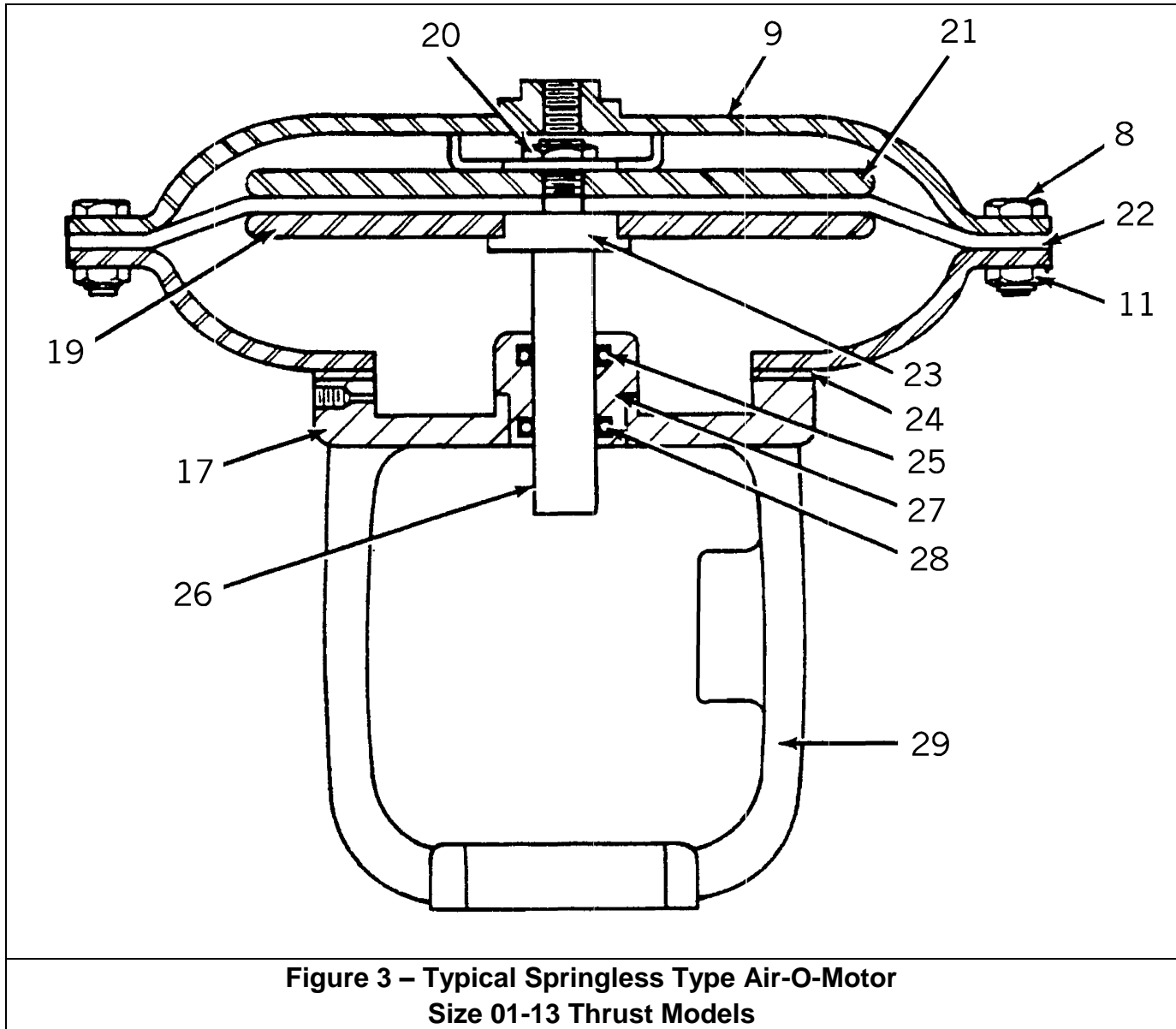
Previously manufactured by Dezurik® and Honeywell®



**Figure 1 – Typical Spring Type Air-O-Motor
Size 01-9, 01-11 & 01-13**



**Figure 2 – Typical Springless Type Air-O-Motor
Size 01-9 and 01-11, Lever and Thrust Models
01-13 Lever Models**



**Figure 3 – Typical Springless Type Air-O-Motor
Size 01-13 Thrust Models**

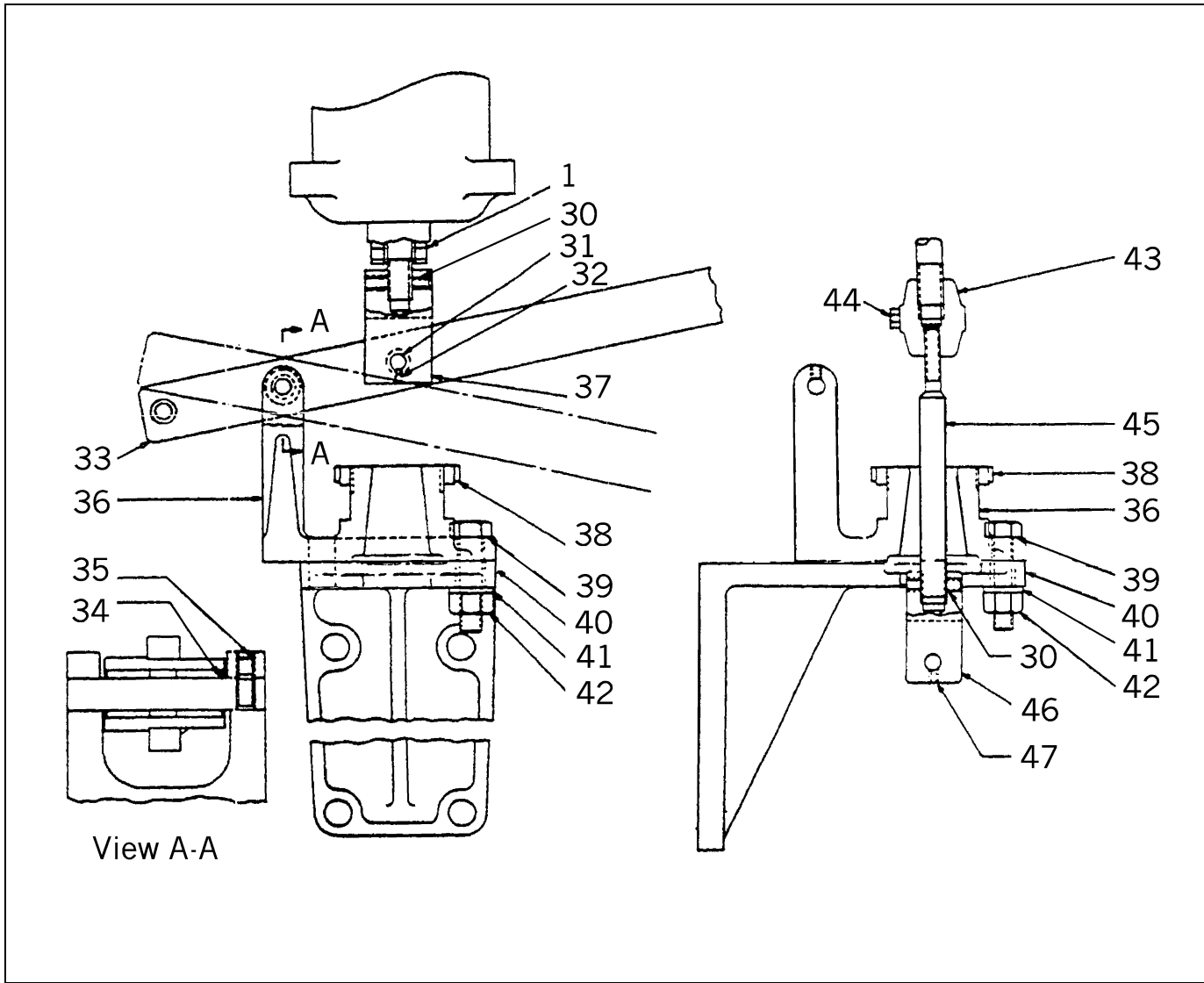


Figure 4 – Lever and Thrust Type Type Air-O-Motor

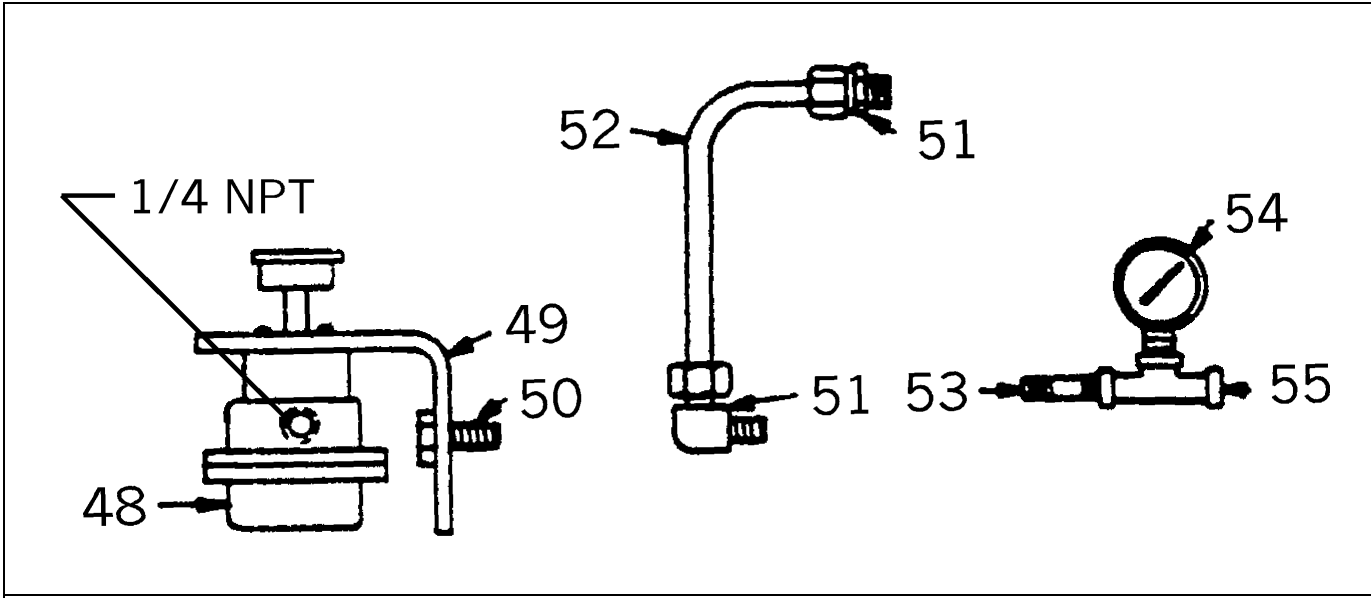


Figure 5 – Accessory Components

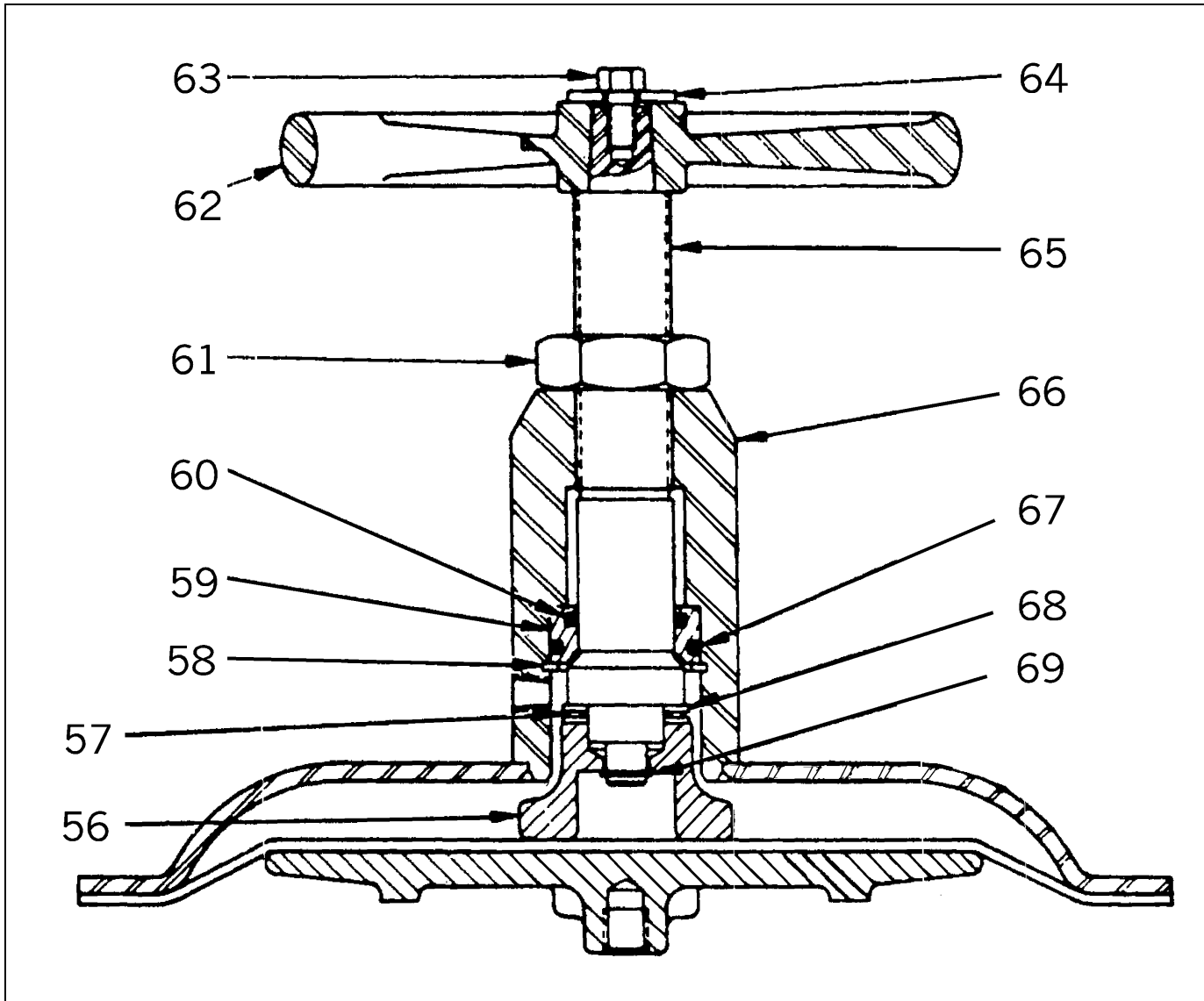


Figure 6 – Top Mounted Handwheel for Type 01 Air-O-Motor

Nor' East

TYPE 01 AIR-O-MOTOR ACTUATOR

Key No. 1 – Spring Adjuster						
	Lever Type			Thrust Type		
Size	01-9	01-11	01-13	01-9	01-11	01-13
	30049036-193	30049095-193	30036217-193	30049004-918	30049051-918	30032539-918

Key No. 2 – Nameplate				
	Lever Type			Thrust Type and Springless
Size	01-9	01-11	01-13	01-9, 01-11, 01-13
	30685977-001	30685704-001	30066175-454	30064967-457

Key No. 3 – Stem			
Size	01-9	01-11	01-13
	30067297-193	30685489-001	30049128-193

Key No. 4 – Screw	
30021923-264	Qty 2

Key No. 5 – Nut		
Size	01-9	01-11, 01-13
	30020134-264	30020129-264

Key No. 6 – Washer		
Size	01-9	01-11, 01-13
	30067180-264	30067181-264

Key No. 7 – Lower Diaphragm Case			
Size	01-9	01-11	01-13
	30032407-277	30032409-277	30032411-277

Key No. 8 – Cap Screw			
Size	01-9	01-11	01-13
	30022031-263	30020411-262	30020411-262
Qty	10	12	16

Key No. 9 – Diaphragm Case Sub-assembly			
Includes Upper Diaphragm Case, Pressure Connection and Internal Stop			
Size	01-9	01-11	01-13
	30067298-915	30685495-001	30033785-915

Key No. 10 – Diaphragm			
Size	01-9	01-11	01-13
	30067301-801	30685491-001	30033673-801

Key No. 11 – Nut			
Size	01-9	01-11	01-13
	30032522-262	30032523-264	30032523-264
Qty	10	12	16

Key No. 12 – Diaphragm Plate			
Size	01-9	01-11	01-13
	30067296-200	30685481-001	30032499-200

Key No. 13 – Cap Screw			
Size	01-9	01-11	01-13
	30026199-264	30026199-264	30026199-264
Qty	6	6	8

Key No. 14 – Spring			
Size	01-9	01-11	01-13
3-15 psi	30067494-279	30685499-001	30032615-226
6-30 psi	30067496-279	30685501-001	30032616-226

Key No. 15 – Spring Seat			
Size	01-9	01-11	01-13
	30049003-200	30032480-200	30032481-200

Key No. 16 – Yoke			
Size	01-9	01-11	01-13
	30033157-200	30033097-200	30033098-200

Key No. 17 – Adaptor			
Size	01-9	01-11	01-13
	30067305-200	30685488-001	30032735-200

Key No. 18 – Cap Screw				
Size	01-9	01-11	01-13 Lever	01-13 Thrust
	30035617-264	30033089-264	30033089-264	30026199-264
Qty	6	6	8	8

Key No. 19 – Lower Diaphragm Plate			
Size	01-9	01-11	01-13
	30067304-277	30685483-001	30033927-277

Key No. 20 – Hex Locknut		
Size	01-9, 01-11	01-13
	30066426-264	30020198-264

Key No. 21 – Upper Diaphragm Plate			
Size	01-9	01-11	01-13
	30067303-277	30685482-001	30037679-277

Nor' East

TYPE 01 AIR-O-MOTOR ACTUATOR

Key No. 22 – Diaphragm			
Size	01-9	01-11	01-13
	30067301-001	30685491-001	30033673-001

Key No. 23 – Stem Washer				
Size	01-9	01-11	01-13 Lever	01-13 Thrust
	30067302-276	30685486-001	30034927-235	30674547-001

Key No. 24 – Gasket				
Size	01-9	01-11	01-13 Lever	Qty
	30032734-859	30032722-859	30032584-859	2

Key No. 25 – O-Ring			
Size	01-9	01-11	01-13
	30032685-196	30354697-011	30032693-196

Key No. 26 – Stem				
Size	01-9	01-11	01-13 Lever	01-13 Thrust
	30066425-316	30685490-001	30682876-001	30674546-001

Key No. 27 – Stem Seal Housing	
Size	01-13 Thrust
	30064639-104

Key No. 28 – Stem Seal	
Size	01-13 Thrust
	30042779-262

Key No. 29 – Yoke	
Size	01-13 Thrust
	30042620-200

Key No. 30 – Set Screw	
	30028081-264

Key No. 31 – Clevis Pin	
	30046502-285

Key No. 32 – Set Screw	
30020236-264	Qty 2

Key No. 33 – Lever Sub-assembly		
Size	01-9, 01-11	01-13
	30046517-001	30046517-002

Key No. 34 – Pivot Pin	
	30046501-285

Key No. 35 – Set Screw	
30020236-264	Qty 2

Key No. 36 – Base Plate	
30046506-200	

Key No. 37 – Clevis			
Size	01-9	01-11	01-13
	30067601-193	30067602-193	30067602-193

Key No. 38 – Yoke Locknut	
30036962-392	

Key No. 39 – Screw *	
30026201-264	Qty 4

Key No. 40 – Mounting Bracket *		
Size	01-9	01-11, 01-13
	30049037-200	30049100-200

Key No. 41 – Washer *	
30020456-264	Qty 4

Key No. 42 – Nut *	
30020234-264	Qty 4

* These items make up wall mounting kit for		
Size	01-09	01-11, 01-13
	30686889-000	30686899-000

Nor' East

TYPE 01 AIR-O-MOTOR ACTUATOR

Key No. 43 – Stem Connector			
Size	01-9	01-11	01-13
	30049000-749	30047045-749	30047047-749

Key No. 44 – Screw	
30008104-264	Qty 2

Key No. 45 – Stem Extension			
Size	01-9	01-11	01-13
	30066599-193	30066600-193	30049136-193

Key No. 46 – Clevis			
Size	01-9	01-11	01-13
	30049034-193	30049093-193	30049093-193

Key No. 47 – Set Screw	
30020236-264	

Key No. 48 – Pressure Regulator	
XXXXXXXX-XXX	

Key No. 49 – Mounting Bracket *		
Size	01-9, 01-11, 01-13 Lever	01-13 Thrust
	30040006-193	30064381-193

Key No. 50 – Screw	
30033049-264	Qty 2

Key No. 51 – Fitting	
30032135-112	Qty 2

Key No. 52 – Copper Tubing	
1/4 Inch O. D. length as required	

Key No. 53 – Nipple	
30024890-112	

Key No. 54 – Gauge	
30065499-450	

Key No. 55 – Tee	
30024893-112	

Key No. 56 – Stem Head			
Size	01-9	01-11	01-13
	30046476-193	30046476-193	30685246-001

Key No. 57 – Bearing
30046489-262

Key No. 58 – Snap Ring
30046487-262

Key No. 59 – Bushing
30046484-159

Key No. 60 – O-ring
30046485-837

Key No. 61 – Nut
30046687-262

Key No. 62 – Handwheel			
Size	01-9	01-11	01-13
	30046477-202	30046477-202	30046478-202

Key No. 63 – Screw
30020120-264

Key No. 64 – Arrow
30046491-112

Key No. 65 – Manual Operator Stem			
Size	01-9	01-11	01-13
	30046482-104	30046482-104	30046483-104

Key No. 66 – Case Subassembly (Includes upper case and housing)			
Size	01-9	01-11	01-13
	30046690-928	30046689-928	30046688-928

Key No. 67 – O-ring
30046486-837

Key No. 68 – Washer	
30046490-262	Qty 2

Key No. 69 – Snap Ring
30046488-262

Nor' East

TYPE 01 AIR-O-MOTOR ACTUATOR

Guarantee

Products, auxiliaries and parts thereof, of Nor'East Controls' manufacture, are guaranteed for a period of one year from the date of shipment against defective workmanship and material only, when properly installed, operated and serviced in accordance with Nor'East Controls' recommendations. Replacement for items of Nor'East Controls' manufacture will be made free of charge if proved to be defective within such time. No claim for special or consequential damages, transportation, or labor shall be allowed. Purchaser shall be solely responsible for determining suitability for use and in no event shall Nor'East Controls be liable in this respect. Equipment or parts manufactured by others but furnished by Nor'East Controls will be repaired or replaced, only to the extent provided in the original manufacturer's warranty to Nor'East Controls. Nor'East Controls does not guarantee resistance to corrosion, erosion, abrasion or other sources of failure, nor does Nor'East Controls guarantee a minimum length of service. Failure of the purchaser to give prompt written notice of any alleged defect under this guarantee forthwith upon its discovery, or use and possession thereof after an attempt has been made and completed by someone other than Nor'East Controls or an authorized representative to remedy defects therein, or failure to return products or parts for replacement as herein provided, of failure to install, operate, and maintain said products or parts according to instructions provided by Nor'East Controls, of failure to pay the entire contract price when due, shall be a waiver of all rights under these representations.

The foregoing guarantee shall be null and void, if, after shipment from our factory, the item is modified in any way or component of another manufacturer, such as but not limited to; an actuator is attached to the item by valves & controls other than a Nor'East Controls

Factory Service Personnel. All orders accepted shall be deemed accepted subject to this guarantee, which shall be exclusive of any other previous guarantee, and this shall be the only effective guarantee or warranty binding on Nor'East Controls, anything to the contrary contained in the purchase order, or represented by any agent or employee of Nor'East Controls, in writing or otherwise, notwithstanding, including but not limited to implied warranties.

THE FOREGOING OBLIGATIONS ARE IN LIEU OF ALL OTHER OBLIGATIONS AND LIABILITIES INCLUDING WARRANTIES OF FITNESS OR MERCHANTABILITY OR OTHERWISE, EXPRESSED OR IMPLIED IN FACT OR BY LAW, AND STATE NOR'EAST CONTROLS AND EXCLUSIVE LIABILITY AND PURCHASER'S EXCLUSIVE REMEDY FOR ANY CLAIM IN CONNECTION WITH THIS SALE OR FURNISHING OF SERVICES, GOODS, OR PARTS, THEIR OWN DESIGN, SUITABILITY FOR USE, INSTALLATION OR OPERATION.

Limitation of Liability

In no event shall Nor'East Controls be liable for any direct, indirect, special or consequential damages whatsoever, and Nor'East Controls' liability, under no circumstances, will exceed the contract price for the goods and/or services for which liability is claimed. Any action for breach of contract must be commenced within 1 year after the cause of the action has occurred.

1000 Riverside Street, Portland, Maine 04103 Ph: 207-210-6633 Fax: 207-210-6634

Sales and Service

Nor' East Controls representatives are located in major cities throughout the world.

For the name of the representative nearest you, contact:

Web site:www.allagashinternational.com **E-Mail:**sales@allagashinternational.com

Nor' East reserves the right to incorporate our latest design and material changes without notice or obligation. Design features, materials of construction and dimensional data, as described in this bulletin, are provided for your information only and should not be relied upon unless confirmed in writing by Nor' East Controls. Certified drawings are available upon request.